



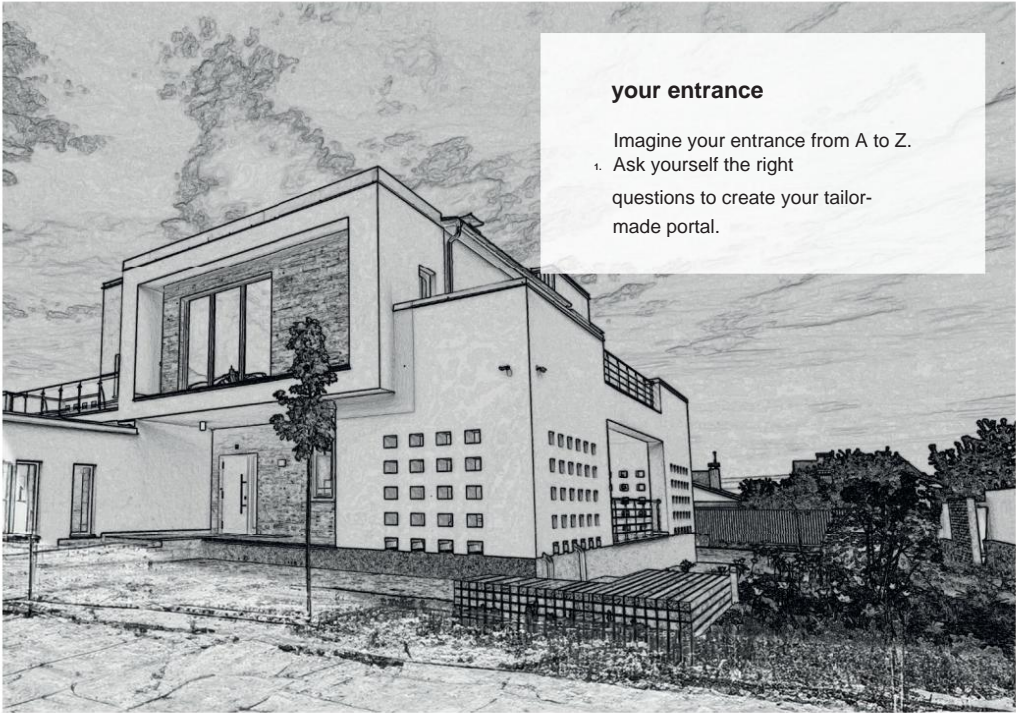
GATES CATALOG 2024 - 2025

CEBEL  
FRANCE



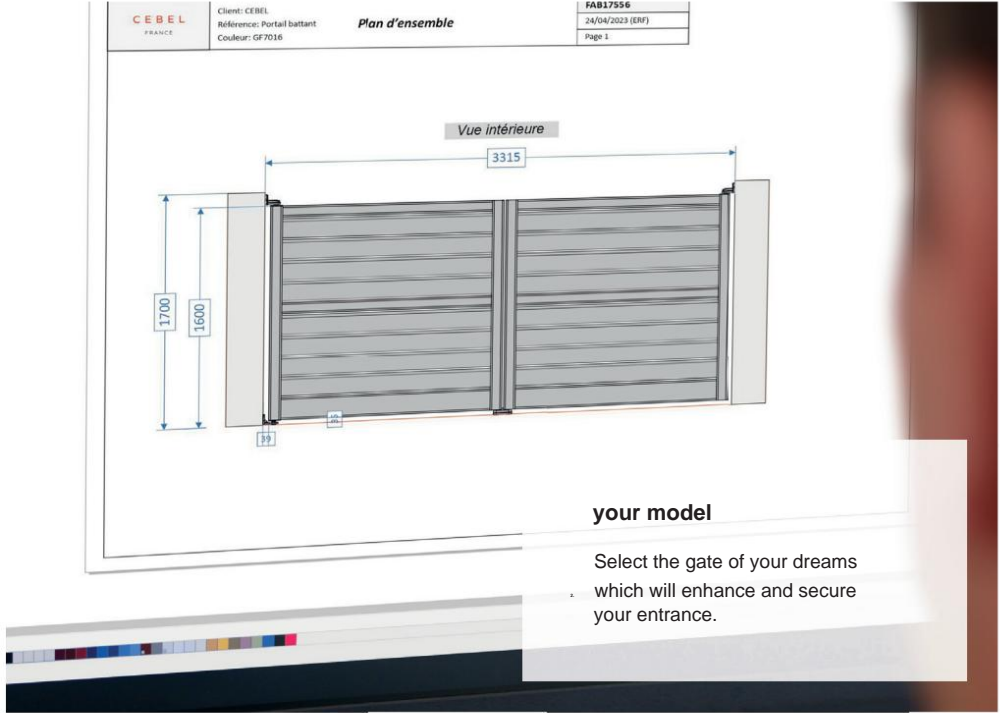
# IMAGINE YOUR PROJECT





**your entrance**

Imagine your entrance from A to Z.  
 Ask yourself the right questions to create your tailor-made portal.



**aesthetics**

Decide on its colors and sound style so that your gate reflects the soul of your home.



## ASK YOURSELF

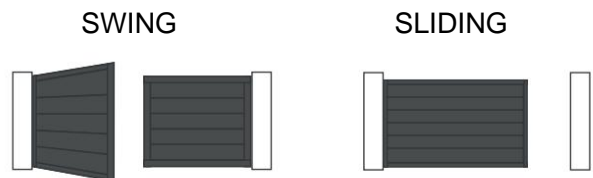
# GOOD QUESTIONS

## WHICH TYPE OF OPENING?



### SWING OR SLIDING

Depending on the configuration of your entrance, choose to equip it a swing gate (2 leaves) or a sliding gate (1 or 2 leaves).

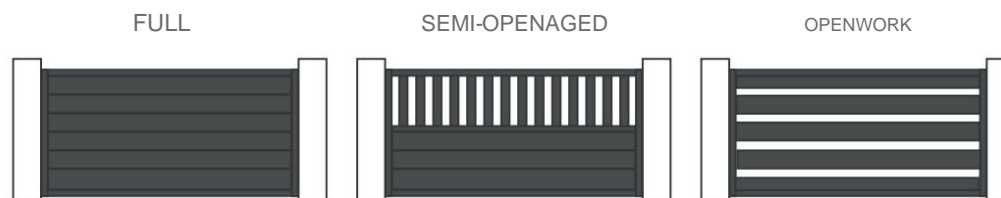


## WHICH DEGREE OF PRIVACY?



### FULLY SHEETED, SEMI-OPEN, FULLY OPEN

Determine the level of privacy you want to offer your property.



## WHICH STYLE?



### CONTEMPORARY, TRADITIONAL OR CLASSIC

Emphasize the style of your home with a gate that adapts perfectly hers.

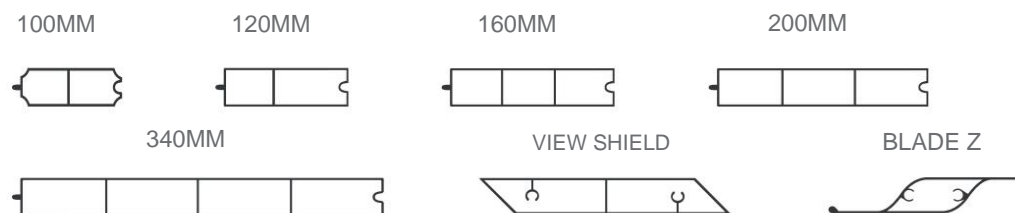


## WHICH TYPE OF BOARDS?



### 100mm, 120mm, 160mm, 200mm, 340mm, Z slats or privacy screen

The width of the blades intensifies the style you have chosen for your entry.



# WHICH TYPE OF OPENING?

**A gate serves to protect and demarcate your property.**

It beautifies your entrance by giving style to your entire exterior.

Before looking at the design, it is important to ask the question of the type of opening. You must take into account the configuration of your space to define which of a swing or sliding gate is most suitable for your home.

**Do not hesitate to ask your installer for advice!**



SPOILED

## SWING

This solution is ideal if your entrance is installed on land with sufficient deep to accommodate the opening swinging with two leaves.

The leaves can have dimensions different (1/3 or 2/3 for example).



SPOILED

## SLIDING

This solution saves space entry clearance level but must have space at the side for accommodate the leaf.

It is possible to put two leaves antagonistic sliding doors, opening on one side and on the other.

## THE GATE

### SLIDING

### SELF-SUPPORTING

Sometimes, the ground does not accommodate the rail for the sliding gate wheels. In these cases, a self-supporting gate can be considered as a solution. It involves less masonry work as it only needs hanging on the side.

## ADAPTATION TO

### SLOPES

CEBEL adapts to all terrains and offers installation solutions to compensate for their slope, whatever the type of opening you choose.

## THE PORTALS

### AND THE RULES

### TOWN PLANNING

Before choosing a gate, it is important to check the legal obligations for its installation and the town planning rules in force (PLU).

In addition, the gate must respect the boundaries of your land.

# WHICH DEGREE OF PRIVACY?

**The filling of a gate determines your level of privacy.**

Opening part or all of the gate can allow light to pass through lightly.

However, your property is then visible from the outside.

A solid gate, for its part, completely hides you from passing glances.

**Do not hesitate to ask your installer for advice!**



PORTAL  
**OPEN**

The gate slats are spaced apart. It is then possible to see your property while securing it.



PORTAL  
**SEMI-OPEN**

Only part of the gate is made up of spaced slats to limit the visibility of your property from the outside.



PORTAL  
**FULLY SHEETED**

The gate slats are glued to each other to prevent your property from being visible from the outside.

# WHICH STYLE?

The style of gate you choose will depend on the architecture of your home and your preferences. Thanks to tailor-made, **CEBEL can study all your requests so that your entrance has a unique portal.**

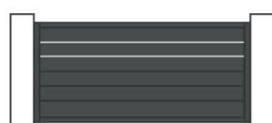
## PORTAL CONTEMPORARY

Contemporary gates are straight and are decorated with accessories to personalize your entrance (edging, decorations, decorative sheets, etc.).

ARICA FULL



MAUNA LOA



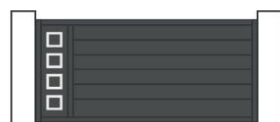
ATACAMA



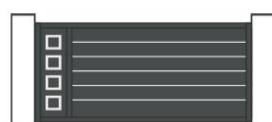
GANYMEDE



HULL



ORION



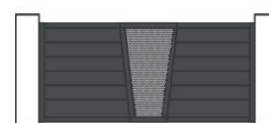
## PORTAL TRADITIONAL

Traditional gates have timeless designs. They are adorned with shapes such as gendarme hats, hangers or oblique crosspieces.

ARICA OPENWORK



SAHARA



MAYON



BEIPAN



KUNSHAN



HAIWAN



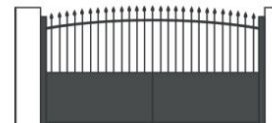
## PORTAL CLASSIC

Classic portals borrow from their wrought iron style.

CLASSIC STRAIGHT



CLASSIC FITTED



CLASSIC GENDARME



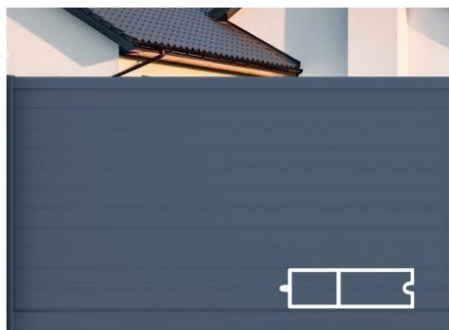
REKURNET

# WHICH BOARDS?

In addition to the style and shape of your gate, **certain models are available in several blade types.**

You can choose the infill for your gate to give a different look and style to your entrance.

Choose the 120 mm blades for their quality-price ratio or the 340 mm blades for their more sober and modern design.



BLADES OF  
**120MM**



BLADES OF  
**160MM**



BLADES OF  
**200MM**



BLADES OF  
**340MM**



BLADES  
**Z**



BLADES  
**VIEW SHIELD**

## THE LAYOUT OF BLADES CHANGE IT LEVEL OF PRIVACY

Glued together, spaced apart or in a special shape, the slats change your level of intimacy.

## THE CHOICE OF BLADES AND THE WIND

The Z slats and privacy screens have the advantage of a solid gate while allowing the wind to pass through. Their shape prevents whistling and reduces wind resistance.

However, for very windy regions, an openwork or semi-openwork gate is strongly recommended.



# GATE COLORS

PANORAMA

## DISCOVER THE CEBEL PALETTE

### **Make an impression with CEBEL standards**

Colors influence emotions, communicate messages and define atmospheres. They are essential for visual perception and creative expression. CEBEL has selected for you 20 trendy colors that will highlight your entrance.

### **200 optional colors**

Choose from more than 200 RAL colors to give your gate the ideal color or match it with your joinery.

Do not hesitate to consult a color chart with your installer to get a precise idea of the color rendering.



\* The DOUCEUR range has 4 standard colors.

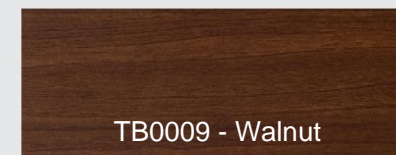
## BI-TONE

100% tailor-made, all CEBEL models can be dressed in two-tone. This option is free for a mix of two standard colors.

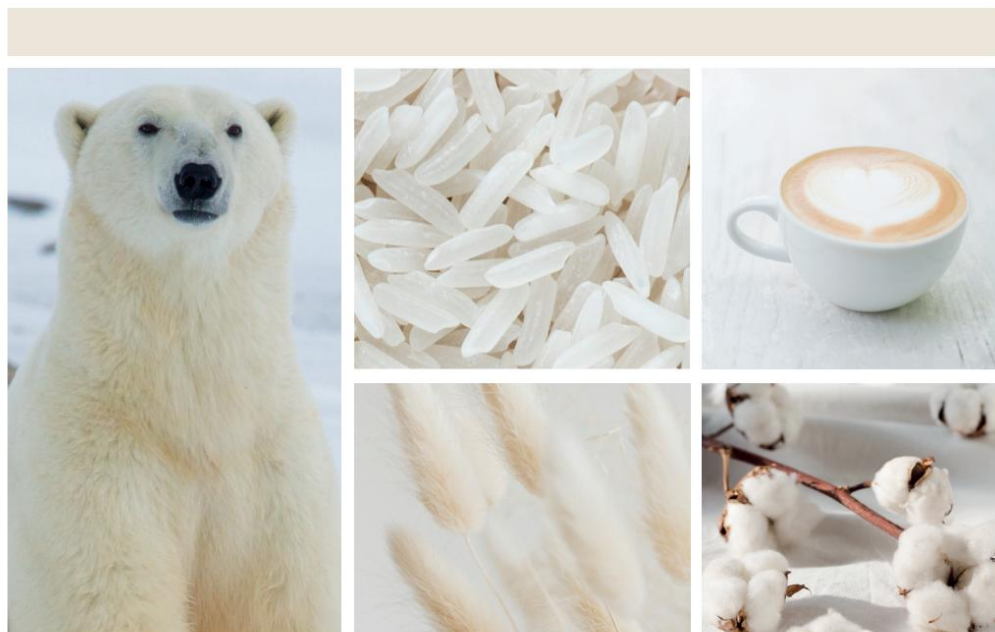
## WOOD MATERIAL EFFECT

Aluminum can be adorned with a very realistic wood tone without the hassle of maintenance.

Dare the bi-material effect for an original portal in keeping with the times.



# THE TIMELESSNESS OF BLACK & WHITE

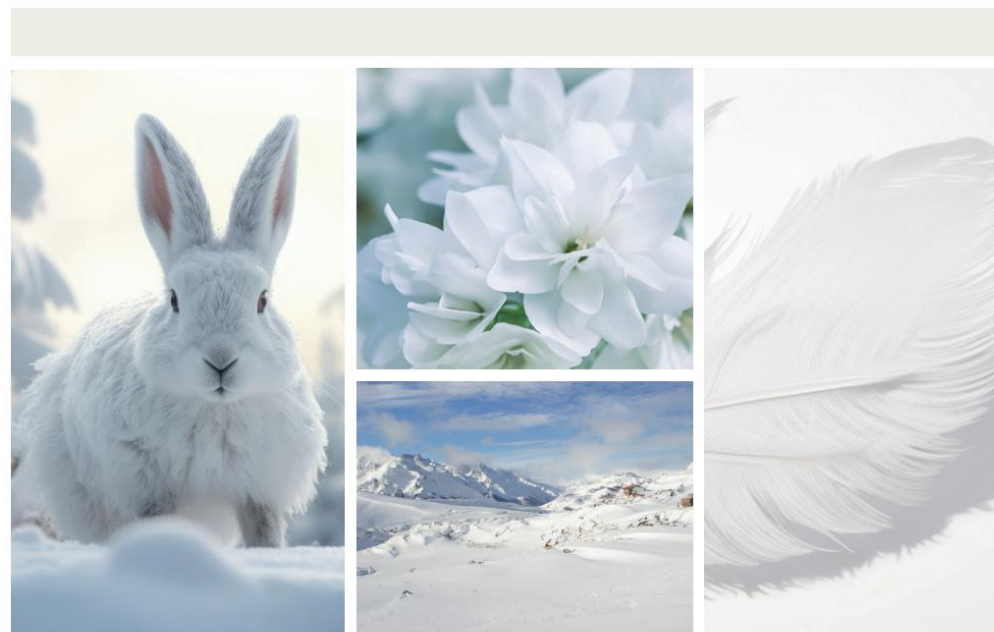


RAKORNET

## PURE WHITE

Elegant, modernized and refined white, this is where it all begins.  
 A garden entrance marked by charm, calm and serenity. Traffic white with warmer tones than RAL 9016 embodies authenticity and softness. Pure white is a timeless and delicate shade that tends towards creamy white.  
 It combines with many colors and harmonizes tenderly with light wood.

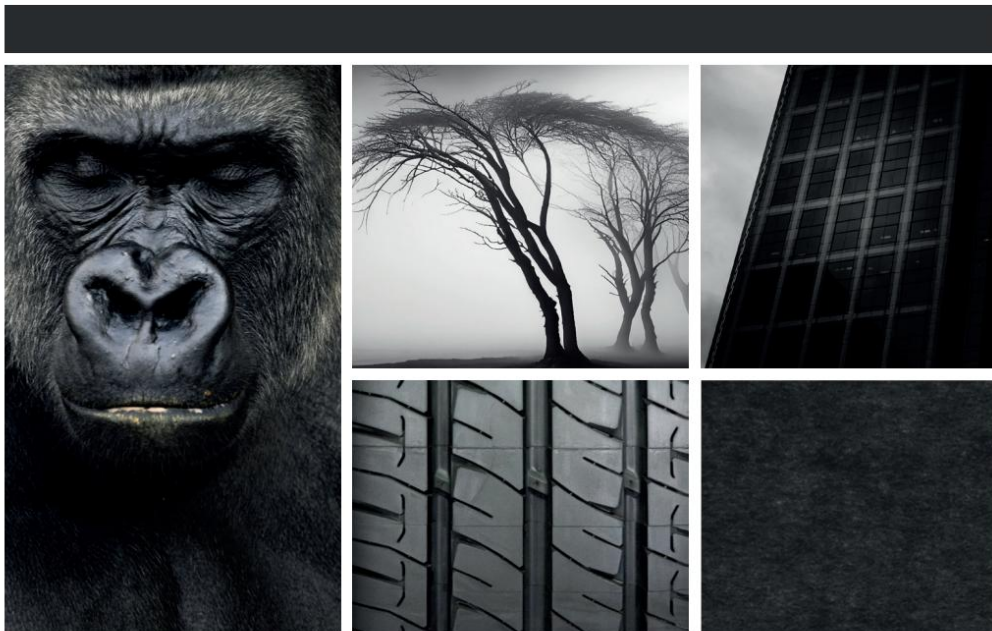
BOXALD



## WHITE SIGNALING

A bright entrance, a refined style, a blanc de blanc like a great vintage.  
 Timeless and goes with everything, this bright white embodies the taste for beauty. It illuminates your gardens, highlights the shapes and creates a luminous atmosphere. From contemporary gates to classic gates, white crosses eras and all styles without losing its popularity.

BOXALD



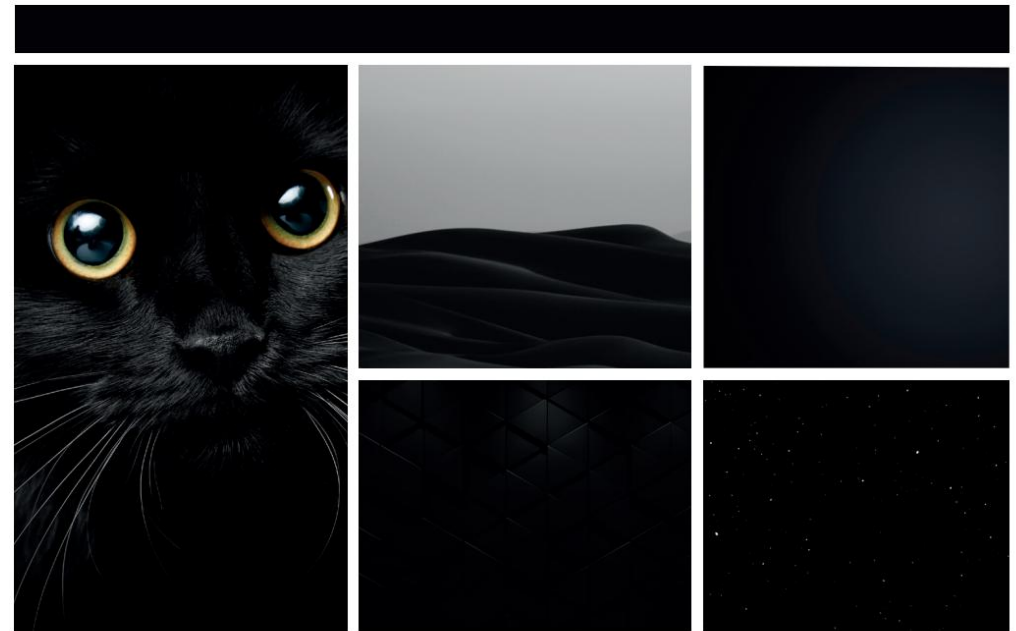
## BLACK SANDED

Sanded black makes its entrance. In a masterful vegetal atmosphere, this shade combines matte and shiny contrasts of metal. Thanks to the metallic pigments, its shimmering finish makes it a not-quite-straight black.

It is softer than deep black.

It elegantly fits properties with stone architecture and works perfectly with the style of urban villas. Sandblasted black goes well with joinery of all colors including wood; while giving them character.

RAAL005



## DEEP BLACK

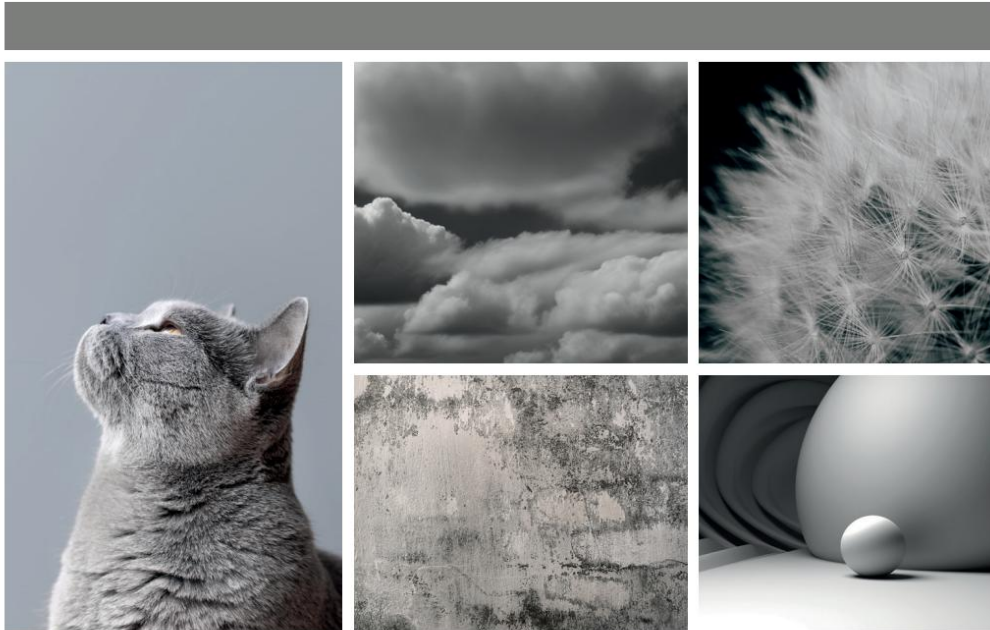
Deep black stands out and complements all styles. It gives depth and refinement while bringing sobriety.

Black adapts, blends and combines with the space. It brings character and sublimates without weariness.

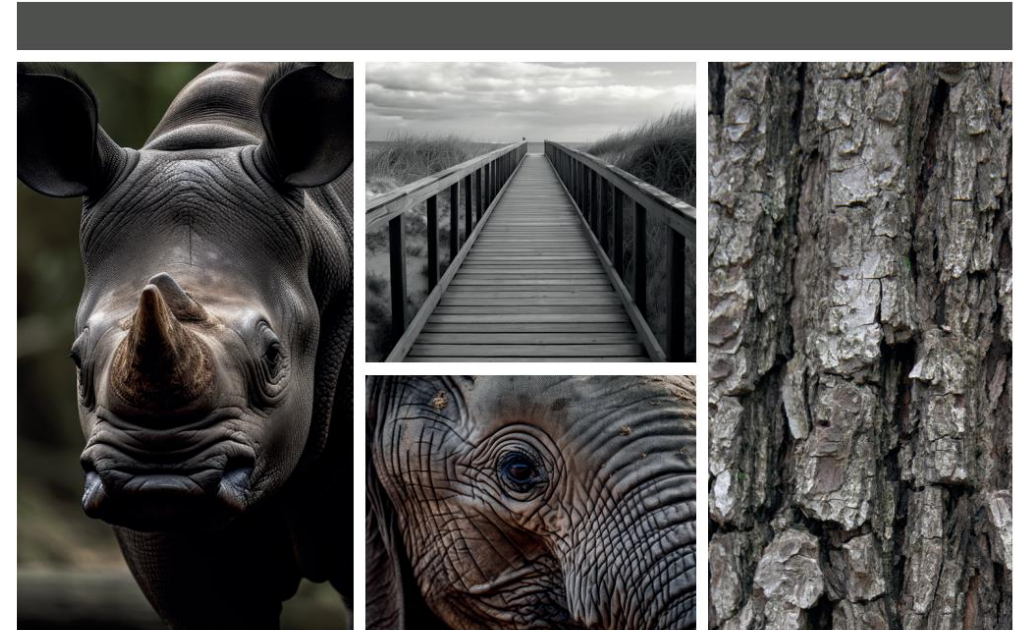
Deep black creates a visual break with a strong personality.

RAAL05

# THE GRAY CAMERA TREND



RAYCORNET



SOBBOOS

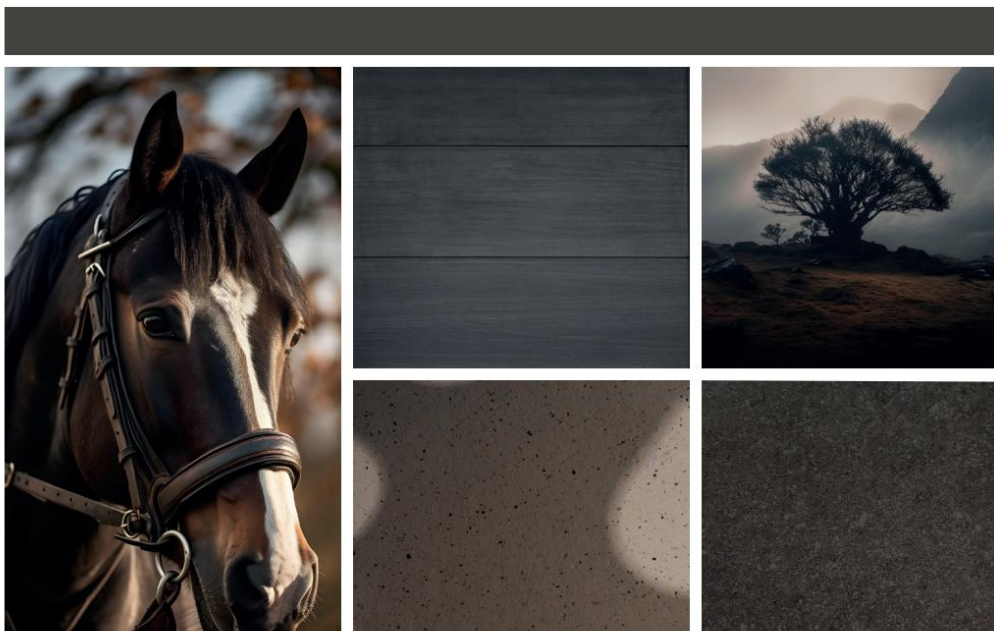
## ALUMINUM GRAY GREY SAND GRAY

Home spirit, garden spirit, greige is a warm color, in tune with the times and very trendy. Located between gray and beige, this shade magnifies your property and highlights your home. It brings a delicate final touch that is decidedly chic.

The atmosphere of your garden is harmonious, balanced and soft. Greige is a safe bet. It pairs nicely with white joinery.

BOVIZ

Push open the doors of escape, enter your garden. The sandy gray comes from the dark sand of certain beaches. This charismatic, charismatic mineral shade offers sophistication and boldness while remaining basic. Depending on the weather, the light, the shadows, this gray transforms. Its pigments with metallic reflections which compose it give it a boost of radiance. Beautifully elegant and warm, it is increasingly popular.

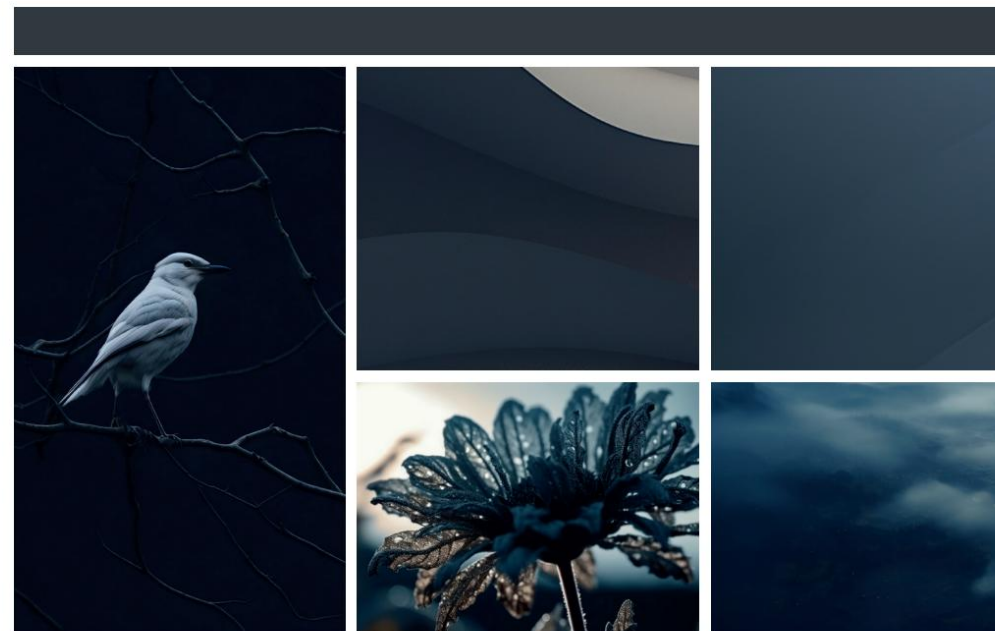


## UMBER GRAY

A charming entrance for a timeless and welcoming atmosphere. This is the promise of umber gray. Here, gray mixes with brown and is presented with great taste. Combined with a fence of this color which demarcates your outdoor living room from the rest of the vegetation, it creates a natural atmosphere. Take full advantage of this intimate environment.

ROOM

This umber gray brings balance and character.



## CHARCOAL GREY

From the gardens of today to the gardens of tomorrow. A very popular gray for decades, it remains unbeatable and timeless. Anthracite gray is a dark gray tending to navy blue. Its asset? It fits everywhere! This intense and elegant color works in all environments and with many, many colors.

ROOM

Anthracite gray has the particularity of modernizing an entire ensemble, including your garden!

# FIND YOUR STYLE

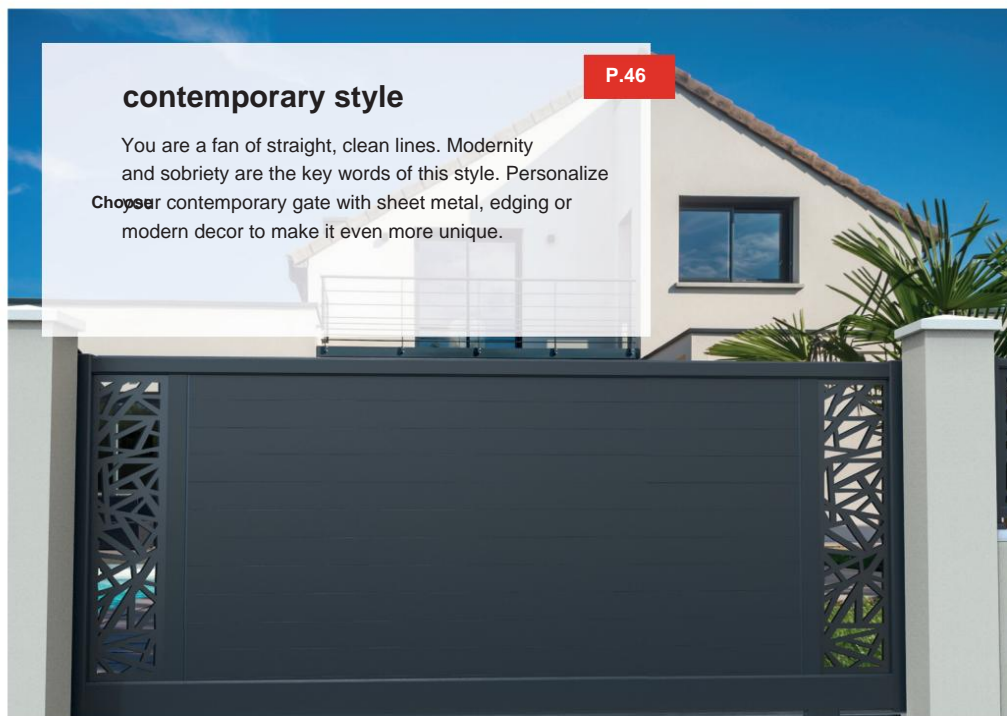


N2100S

Sanded black

MALO00\_C1\_H2

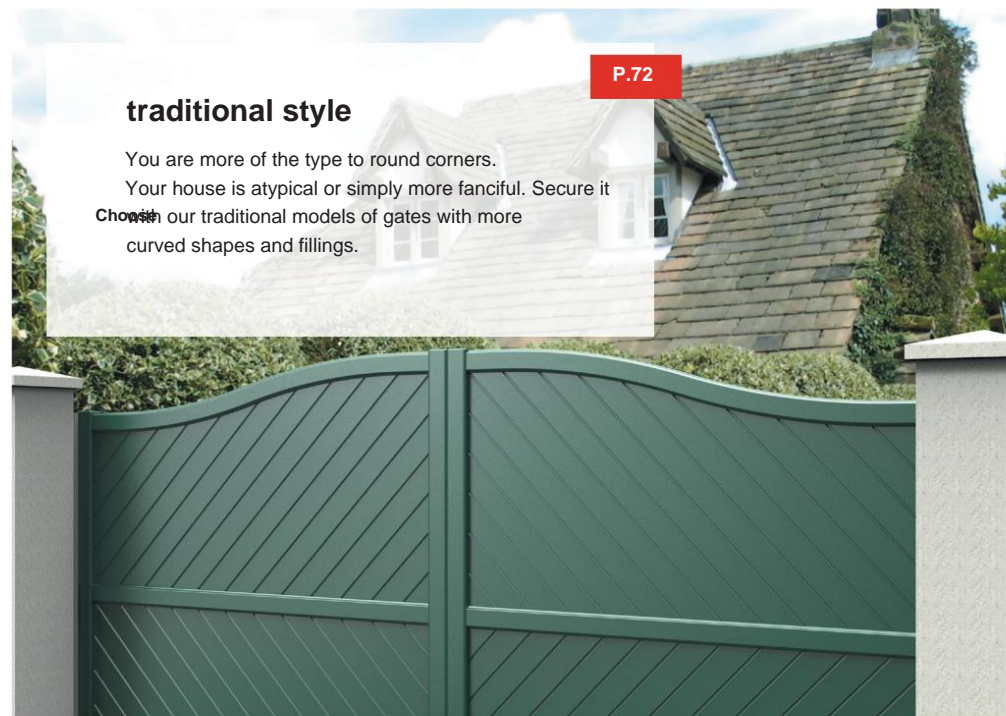
Horizontal slats 200 mm with edging



### contemporary style

P.46

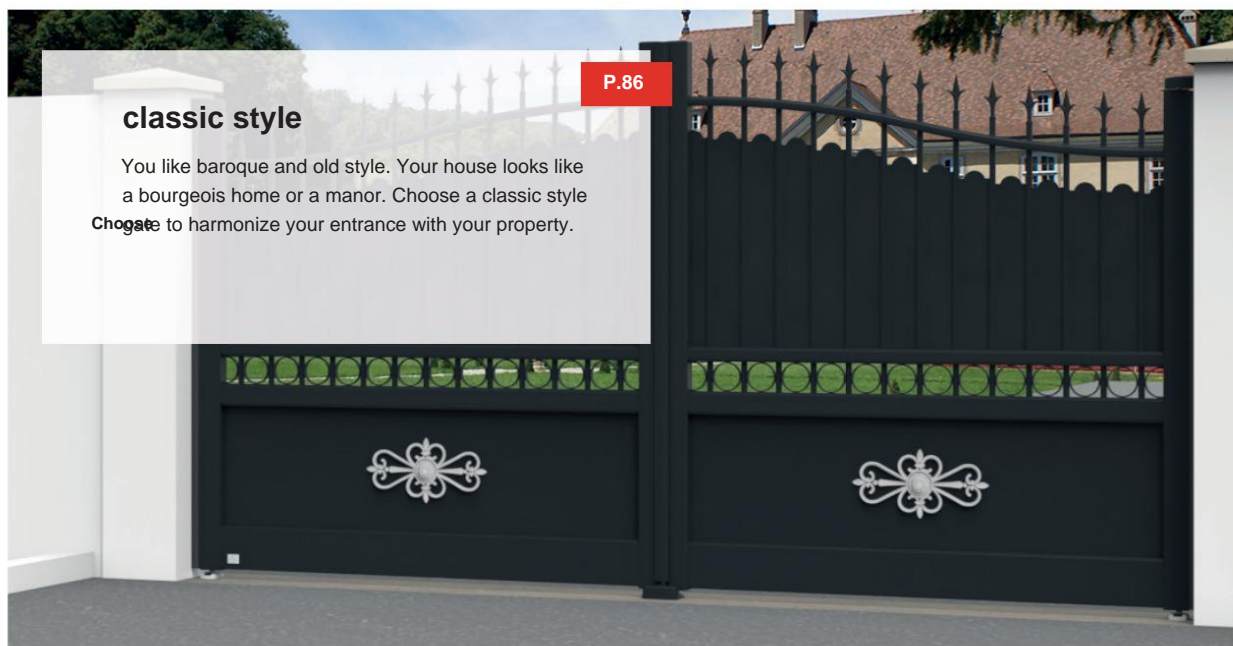
You are a fan of straight, clean lines. Modernity and sobriety are the key words of this style. Personalize your contemporary gate with sheet metal, edging or modern decor to make it even more unique.



### traditional style

P.72

You are more of the type to round corners. Your house is atypical or simply more fanciful. Secure it with our traditional models of gates with more curved shapes and fillings.



### classic style

P.86

You like baroque and old style. Your house looks like a bourgeois home or a manor. Choose a classic style gate to harmonize your entrance with your property.



### the gentle range

P.92

You want to secure your home while controlling your budget. Choose the DOUCEUR range from CEBEL which combines quality and price.



SOULTEMPORARY



RAL 7022  
Umber gray

ARIC12\_B\_V6V6  
160-mm vertical slats with intermediate crossbar

# THE PORTALS CONTEMPORARY

Inspired by recent, modern homes, contemporary gates draw their style from straight, clean lines for a sober finish. Personalize your gate by adding borders, decorative sheets or decorations for a unique style.

Whatever type of opening you need and the degree of privacy you want, CEBEL's contemporary models will adapt to your needs. The hardest part will be making a choice among all these models.

## ARICA FULL



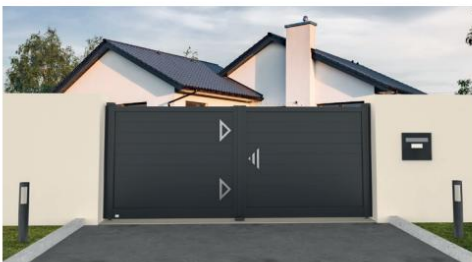
## MAUNA LOA



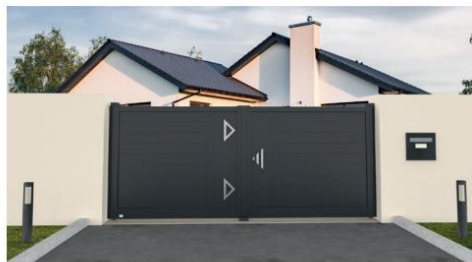
## ATACAMA



## GANYMEDE



## HULL



## ORION



## THEIR FEATURES

In contemporary gates, all CEBEL gate models have a high straight crossbar. The straight-shaped portal has a rectangular appearance, resolutely modern.

Their filling is infinitely customizable so that you can best adapt them to your expectations and needs.

## LEAF / SLIDING

Each gate model exists in a swing or sliding version.

You can personalize it 100% by choosing the dimensions of your portal, but also by determining its filling, its colors, its customizations.

Design your gate from A to Z: don't hesitate to mix colors and slat sizes for even more originality.

## EXTERIOR IN

### AGREEMENT

Each model has its matching gate and fence. Do not hesitate to inquire for a completely matching exterior.

CONTEMPORARY



# ARICA FULL

## “Sobriety and simplicity”

This range of straight gates with simple and sober lines allows you to find a model that fits easily into all environments. Its finish highlights its contemporary design.





## ZOOM ON HIS SUCCESS

Every year, the ARICA model is the most popular. Its timeless sobriety makes it a real all-purpose portal. The 200 mm slat model has had its effect and is ranked number 1 in sales for the 5th consecutive year. He is unbeatable.

CONTEMPORARY



## Zoom on COLORS

Combine the colors with the minimalist style of ARICA and obtain a tailor-made gate that harmonizes with your garden, your joinery and your region.





### Zoom on

### THE TWO-TONE

Combine two distinct colors and create a unique portal.  
Choose a sober and timeless shade for the gate frame, and dare more fanciful shades for its filling.

Be bold: be yourself!



## Zoom on **SPECIAL BLADES**

The ARICA gate can be adorned with special slats such as louvered slats (screening) or Z slats. Arranged horizontally, they give an appearance that combines aesthetics and functionality.

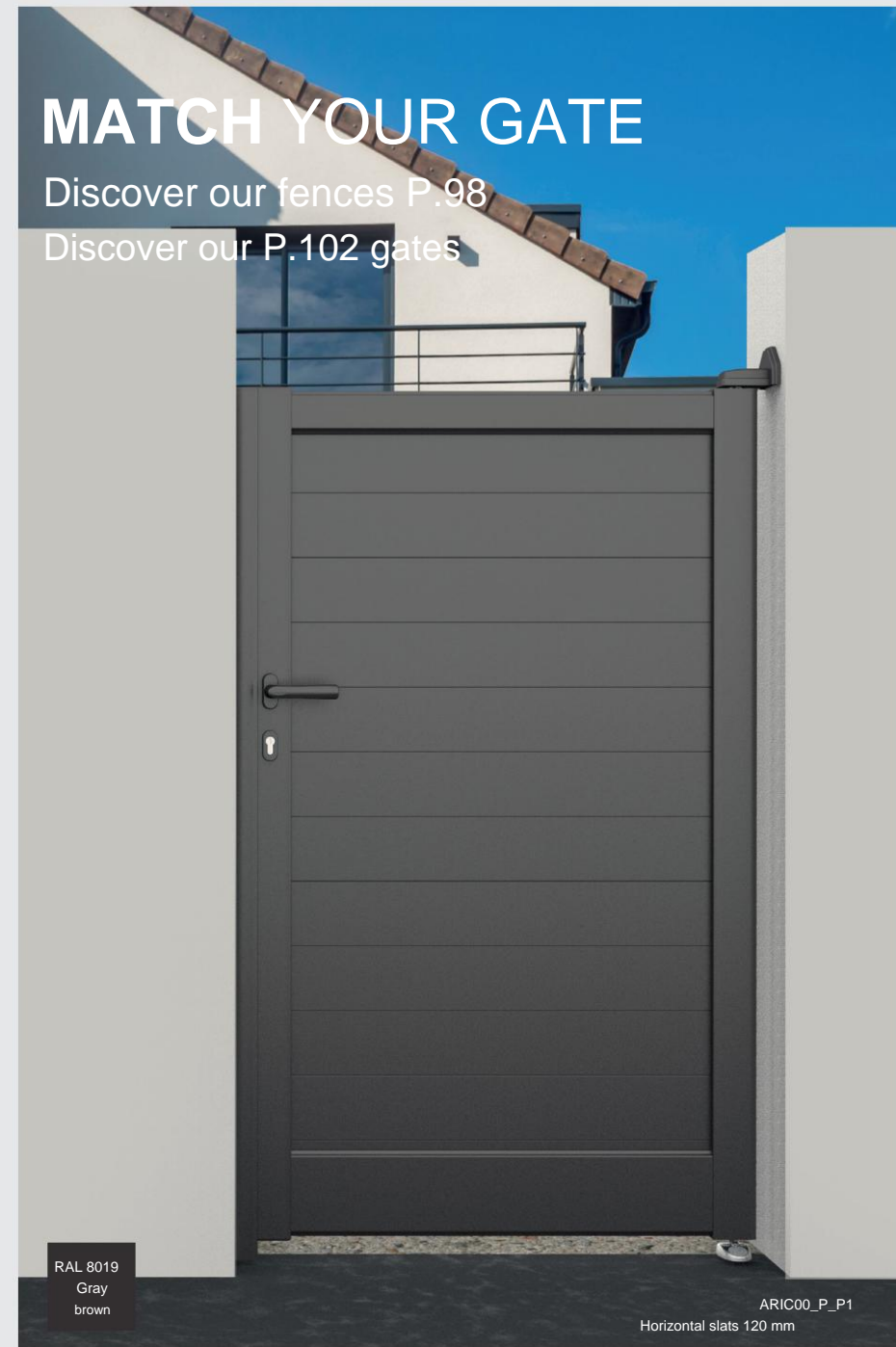
They bring visual lightness while highlighting your entrance and creating a subtle play of light and shadow.





## Zoom on **POLES**

Combine business with pleasure by opting for aluminum posts in the same color as your gate. A perfect and optimal solution for a contemporary design without masonry to be carried out.





CONTEMPORARY



# MAUNA LOA

## “Design and linear”

This range of gates with clean lines and an ultra-design style will beautify and modernize your entrance.

The borders elegantly mark and adorn the MAUNA LOA. It's up to you to choose their number, location and color.





## ZOOM ON HIS SUCCESS

Due to its simplicity and its borders which give it a certain elegance, the MAUNA LOA is one of the best-selling contemporary gates. The borders emphasize its linear and modern design.

CONTEMPORARY



Optional  
RAL 3005  
Red wine

MALO22\_C1\_P1S5  
120 mm horizontal slats with stainless steel edging

## Zoom on ITS BRUSHED EDGES

Horizontal and vertical borders accompany the lines of your gate. Stand out with this range of MAUNA LOA which will highlight the elegance and modernity of your entrance.

Customize with background and style!



RAL 7016  
Charcoal grey

MALO00\_C1\_V2  
200 mm vertical slats and 3 120 mm slats with white edging



RAL 5014  
Pigeon blue

MALO22\_C1\_S2BI  
200 mm horizontal slats with stainless steel edging and bars

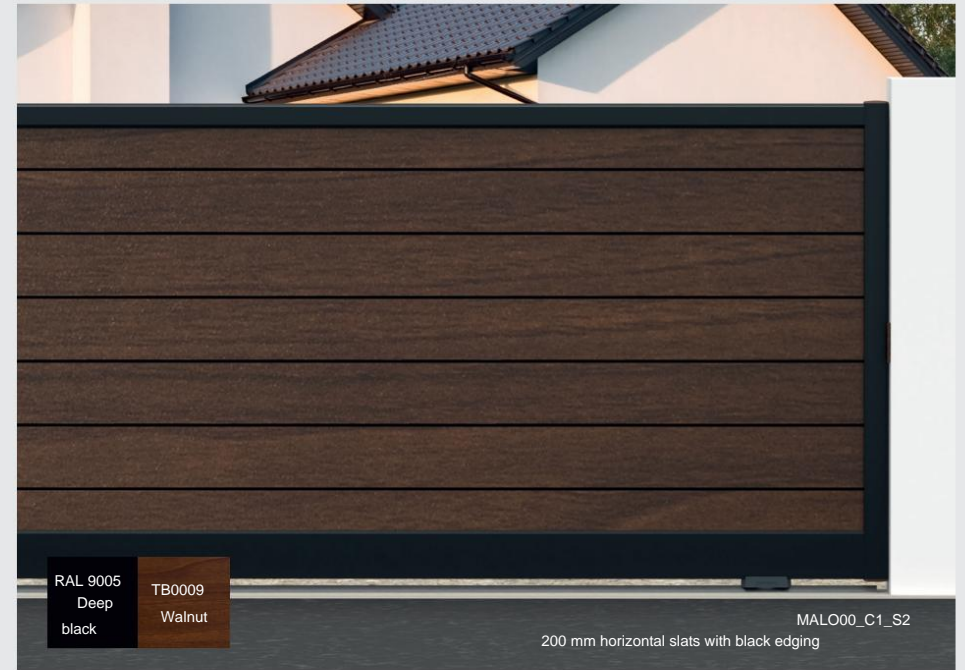


RAL 7016  
Charcoal grey

MALO00\_B\_S12  
120 mm horizontal slats with edging and decoration on 200 mm imitation stainless steel slats

### Zoom on THE TWO-TONE

Push your personalization to the limit and create the portal that suits you. Two-tone of different colors or two-tone of a color and a wood tone to mix materials, it's up to you.



RAL 9005  
Deep  
black

TB0009  
Walnut

MALO00\_C1\_S2  
200 mm horizontal slats with black edging



RAL 7016  
Charcoal grey

TB0007  
Oak  
Golden

MALO00\_C1\_P2B2  
200 mm horizontal slats and 200 mm wood tone slat decór with stainless steel edging

## Zoom on ITS COLORED EDGES

Want originality in all subtlety? The CEBEL borders mark and personalize your entrance.

Show off your creativity with thicker borders that can be the color of your choice.

Sometimes all it takes is a pinch of audacity and a bit of inspiration to create your portal as a true mirror of your personality.





## Zoom on **POLES**

Combine business with pleasure by opting for aluminum posts in the same color as your gate. A perfect and optimal solution for a contemporary design without masonry to be carried out.



CONTEMPORARY



# ATACAMA

**“Artistic and inspiring”**

A range of straight gates where many decorative choices are possible. Choice of sheets and choice of location will make it unique, just like your entrance.





## ZOOM ON HIS SUCCESS

ATACAMA is the successful portal of the moment. Its simple and elegant style adapts to many entrances.

Its advantage? Its personalization. It is available in several models thanks to the new cut sheets. Create your own!



CONTEMPORARY



RAL 7016  
Charcoal grey

ATAC23\_B\_P1TB  
Horizontal slats 120 mm with broken plate

## ZOOM ON SHEETS

CEBEL offers you a wide range of decorative sheets to beautify and give a very personal character to your gate. With multiple geometric or natural inspired patterns, the choice is yours.

**Find the decorative sheets on page 40.**



RAL 7016  
Aluminum gray

ATAC31\_C1\_P1TU  
120 mm horizontal slats with bamboo sheet



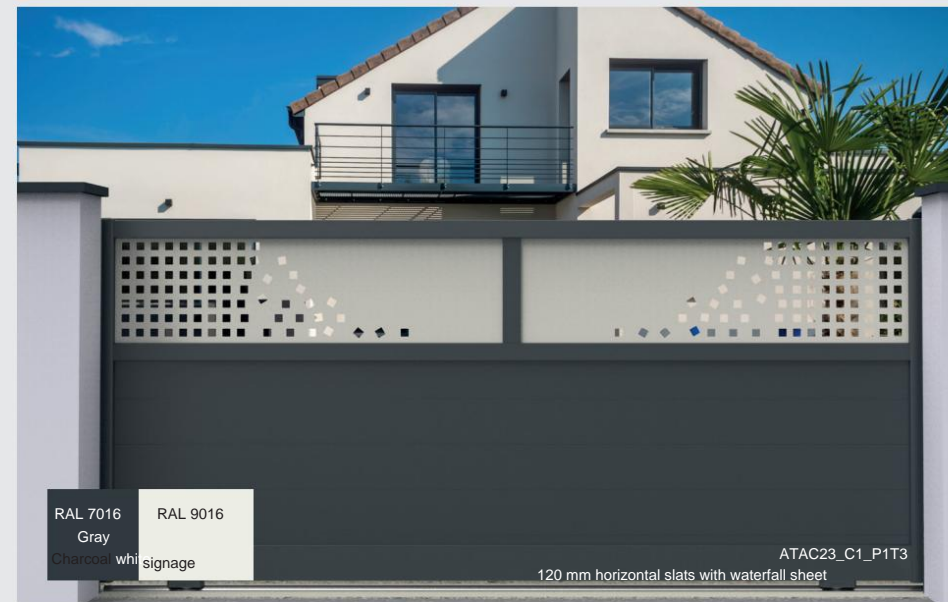
RAL 8014  
Sepia  
brown

ATAC23\_C1\_P1TL  
120 mm horizontal slats with labyrinth plate



## ZOOM ON THE TWO-TONE

Very trendy at the moment in our homes, two-tone is arriving in our gardens. Shades of color or two-tone color and wood. Create and stand out with modernity.



## ZOOM ON SPACED BLADES

The spaced blades on the ATACAMA portal give the model an airy style. In the category of semi-openwork gates, it fits perfectly into a visibility game in front of your home.

You can choose the more economical 160 mm blade or the more contemporary look of the 200 mm blade.





RAL 5003

Sapphire blue

ATAC31\_B\_P6TL

Horizontal slats 160 mm with labyrinth plate

## Zoom on POLES

Combine business with pleasure by opting for aluminum posts in the same color as your gate. A perfect and optimal solution for a contemporary design without masonry to be carried out.



RAL9007

Greige

ATAC00\_CL\_TL

120 mm horizontal slats with labyrinth plate

# MATCH YOUR GATE

Discover our fences P.98

Discover our P.102 gates



RAL 8019  
Gray brown

GANY16\_C1\_P1

120 mm horizontal slats with trapeze drawer decoration

# GANYMÈDE

## “Original and personalized”

Between the choice of colors and patterns, a multitude of possibilities are available to you for the GANYMÈDE range of gates. Beautify your gate as you wish with brushed aluminum decorations.



RAL 1015  
Ivory  
clear

GANY27\_C1\_P1

Horizontal slats 120 mm with wing decoration



RAL 5003  
RAL 9005  
Dark  
black

Horizontal slats 160 mm with square stone decoration

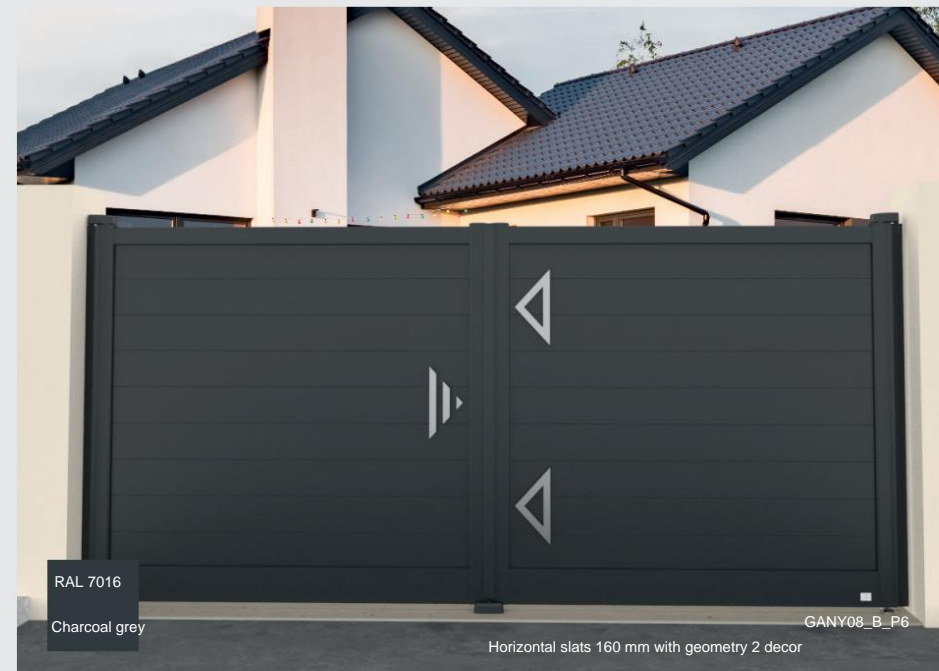
Reference  
340 mm blades  
GANY21\_C1\_P6

## ZOOM ON ITS DECORS

The decorations have an eye for detail. They adorn your gate with great style and create for you a unique entrance that suits you.

The smooth, metallic surface of the decor reflects the light in a subtle way.

Find the decorations on page 42.



RAL 7016  
Charcoal grey

Horizontal slats 160 mm with geometry 2 decor

GANY08\_B\_P6



RAL 6021  
Green  
pale

Horizontal slats 120 mm with hollow square decoration

GANY09\_B\_P1



RAL 7016

Charcoal grey

CARE12\_B\_P2DA

200 mm horizontal slats with porthole decoration

# HULL

## “Distinctive and refined”

Discover the CARÈNE model with clean and distinctive lines adorned with a brushed aluminum decor framed by a 340mm blade. This gate presents a unique combination of originality, modernity and durability.



RAL 9005  
Deep  
black

GANY008\_B\_P6DA

Horizontal slats 160 mm with geometry 2 decor



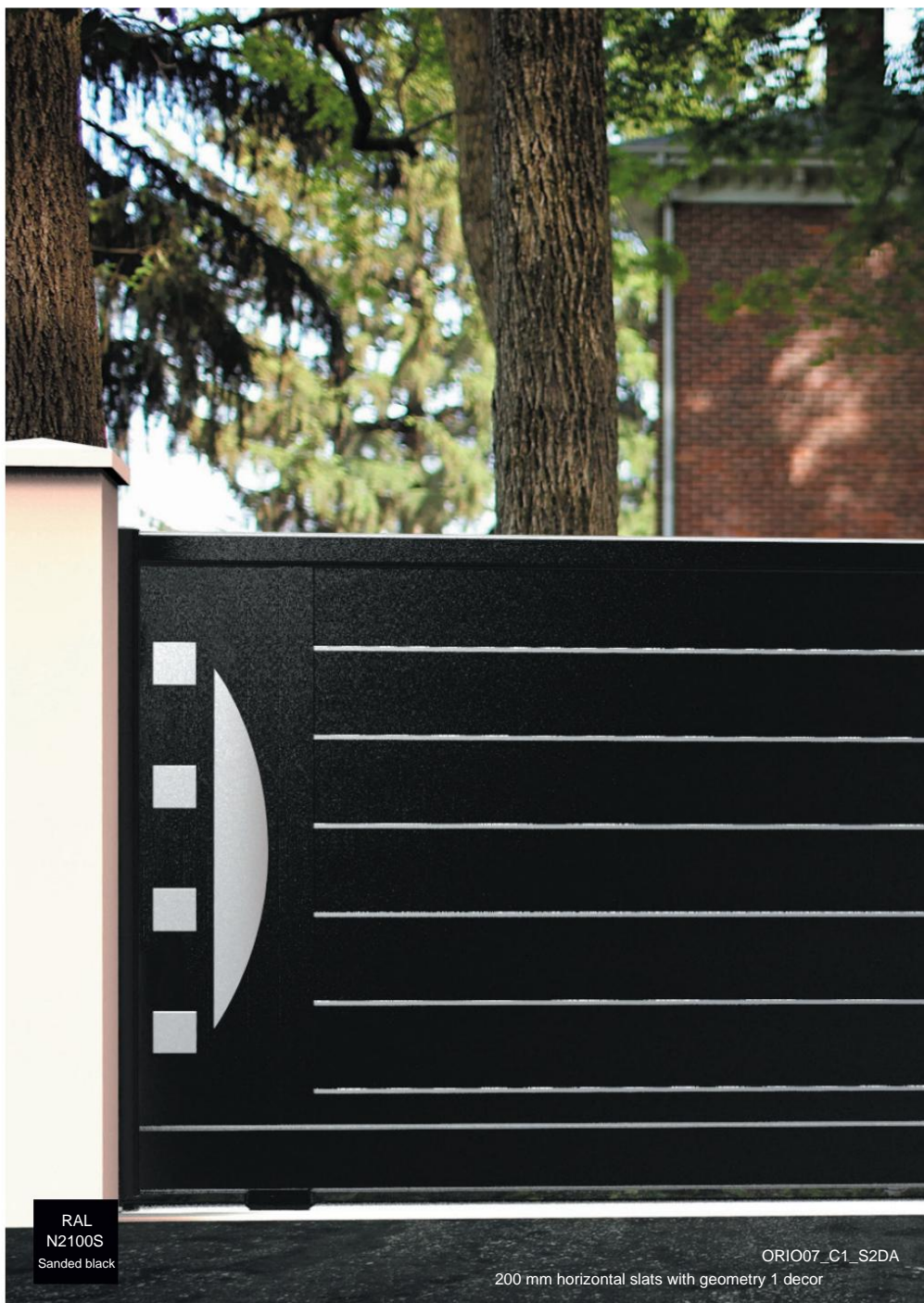
## ZOOM ON HIS SUCCESS

Decorations can take the form of geometric patterns, clean lines or artistic details, adding a unique and personalized touch to the structure.

Find the decorations on page 42.



CONTEMPORARY



RAL  
N2100S  
Sanded black

ORIO07\_C1\_S2DA

200 mm horizontal slats with geometry 1 decor

# ORION

**“Modern and futuristic”**

When a CARENE and a MAUNA LOA cross, they give an ORION. Assemble brushed aluminum decorations and aluminum edging for an avant-garde look.



Optional  
RAL 3005  
Red wine

ORIO04\_C1\_S2DA

Horizontal slats 200 mm with undulation decoration



## ZOOM ON HIS SUCCESS

The aesthetics of the portal evoke a feeling of modernity. The wide slats of the gate are highlighted by borders, adding a distinctive touch to the overall style. These borders combined with the decorations can follow the geometric lines of the portal, thus creating a futuristic and dynamic aesthetic.

Find the decorations on page 42.



FUNCTIONAL



RAL 7016  
Charcoal grey

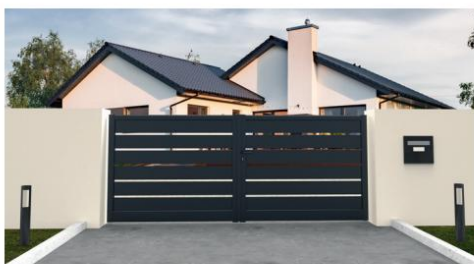
ARIC12\_B\_LHP6  
Slats spaced on horizontal slats 160 mm

# THE PORTALS TRADITIONAL

Inspired by classic houses and legacies of the past, traditional gates draw their inspiration from ancient forms that span the ages. Modernized with new colors and original openwork, they offer a new lease of life for a timeless style.

Whatever type of opening you need and the degree of privacy you want, CEBEL's traditional models will adapt to your needs. The hardest part will be making a choice among all these models.

## ARICA OPENWORK



## SAHARA



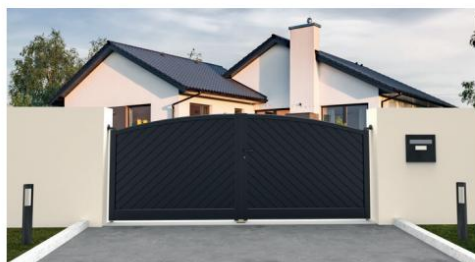
## MAYON



## BEIPAN



## KUNSHAN



## HAIWAN



## THEIR FEATURES

In traditional portals, the forms of portals are in the spotlight (policeman's hat, arch and oblique). The gates also offer V-shaped interiors or openwork shapes. Guaranteed success year after year.

Their filling is infinitely customizable so that you can best adapt them to your expectations and needs.

## LEAF / SLIDING

Each gate model exists in a swing or sliding version.

You can personalize it 100% by choosing the dimensions of your portal, but also by determining its filling, its colors, its customizations.

Design your gate from A to Z: don't hesitate to mix colors and slat sizes for even more originality.

## EXTERIOR IN

### AGREEMENT

Each model has its matching gate and fence. Do not hesitate to inquire for a completely matching exterior.

OPTIONAL

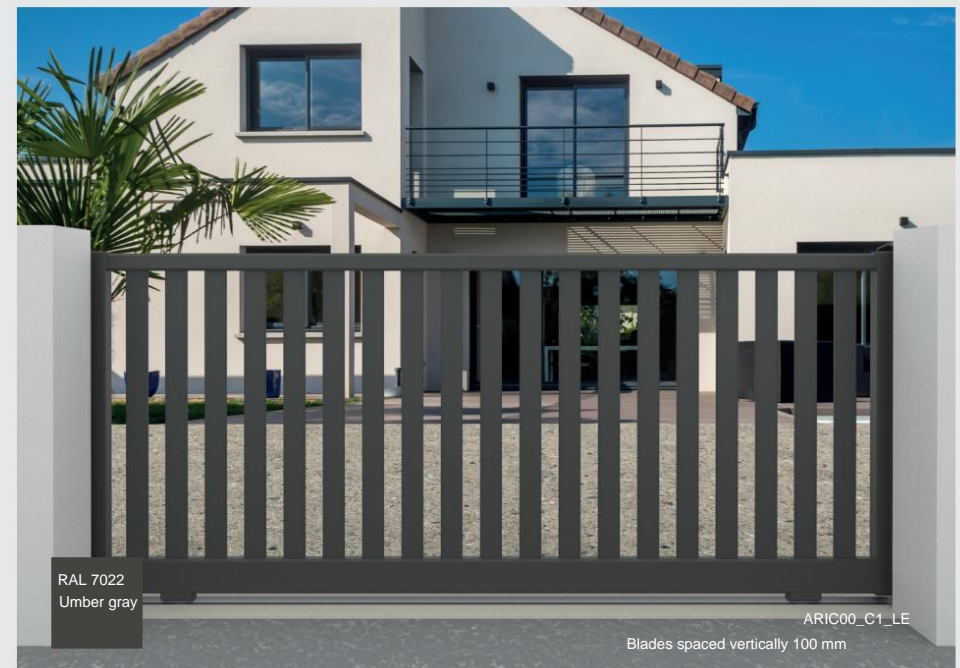


# ARICA OPENWORK

## “View Through”

The openwork ARICA gate creates a simple and functional entrance that combines traditional design and comfort. It transforms depending on the opening, always in a light and airy style.





## ZOOM ON HIS SUCCESS

Depending on the blades chosen, the gates in the ARICA openwork range have a different design. Choose between a higher opening with a lower crossbar or the opposite. Each year, these models are among the best-selling.

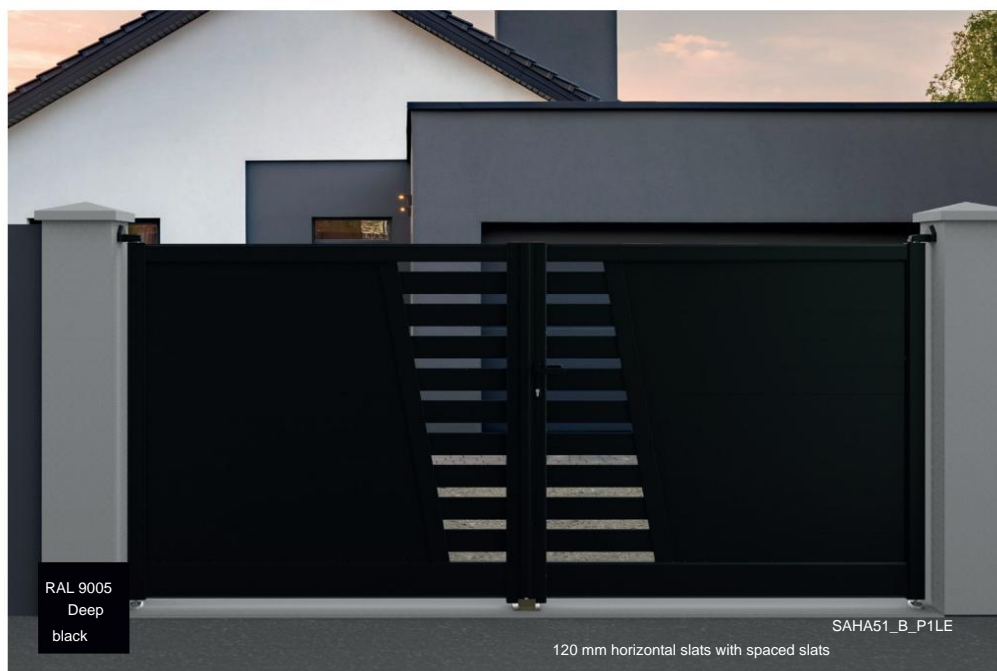
FUNCTIONAL



# SAHARA

## “V-shaped”

Its filling in spaced strips or perforated sheet metal gives it a slender shape and a wasp waist. This family of straight gates has a more traditional style with its V shape.





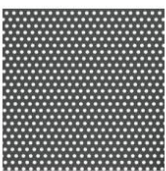
## ZOOM ON HIS SUCCESS

The SAHARA range offers numerous combinations between spaced slats and perforated sheets.

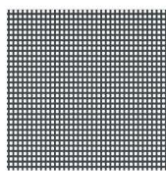
## 4 FILLINGS AVAILABLE



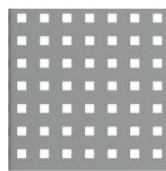
Spaced blades



Round perforated sheet metal



Square perforated sheet metal



Stainless steel style sheet





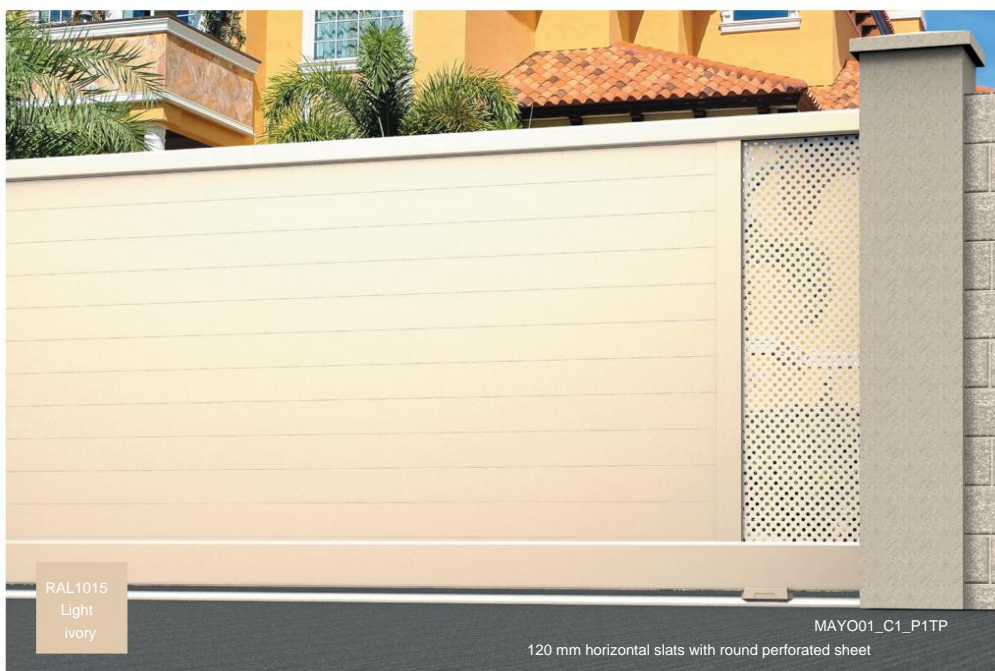
ERADITIONAL



# MAYON

## “Right and discreet”

The MAYON models are the rectangular version of the SAHARA range. It is a large collection of straight portals with vertical infills at different locations.

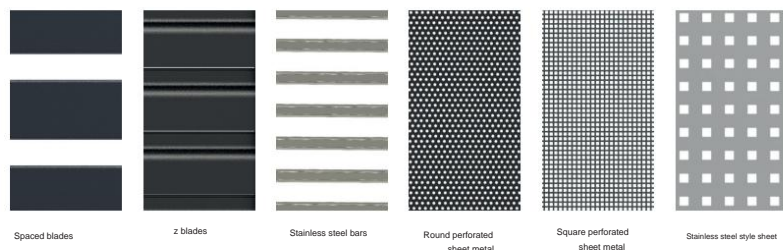




## ZOOM ON HIS SUCCESS

The MAYON range offers numerous combinations between simple spaced slats, Z slats against the opposite, trendy stainless steel bars and perforated sheets.

## 6 FILLINGS AVAILABLE





# BEIPAN

## “The cocked hat of your entrance”

The gendarme hat is a very common form of gate in France. Its curvature is the charm of BEIPAN models.

The upper part gives its distinctive and elegant appearance to the gate. It can also be declined in its opposite form.





## ZOOM ON ITS SHAPE

With a bow and two points above the entrance, the constable hat is an eye-catching visual element. The interior can be full, semi-openwork or openwork according to your preferences

BRANDITIONAL



RAL 5014

Pigeon blue

KUNS13\_C2\_LEV1

Slats spaced on vertical slats 120 mm

# KUNSHAN

## “The keystone of your home”

The curved, rising or falling shape of the KUNSHAN models gives the gate a soft and elegant line. It creates a sense of symmetry and balance for a visually calming and harmonious style.

It can also be declined in its opposite form.



RAL 7045

Pebble gray

KUNS12\_B\_V1V1

120 mm vertical slats with intermediate crossbar



## ZOOM ON ITS SHAPE

Arched gates often have an elegant, timeless design that adds an aesthetic and charming touch to the entrance to a property. The arch creates a soft appearance and can complement different architectural styles.





RAL 9005  
Deep  
black

HAIW00\_B\_ID  
100 mm blades inclined at 45°

# HAIWAN

## “Pointing towards the sky”

The HAIWAN bias-shaped model, also known as a cutaway or diagonal gate, is distinguished by its design which has an inclined shape. Unique and original, it helps to visually set a property apart.

It can also be declined in its opposite form.



RAL 1015  
Light  
ivory

HAIW13\_B\_LEV1  
Slats spaced on vertical slats 120 mm



## ZOOM ON ITS SHAPE

The angled design can create an illusion of visual enlargement, making the entryway appear larger than it really is. This range can be adapted to different architectural styles depending on the infill details.





STYLE  
CLASSIC



RAL 7045  
Pebble gray

EMILE\_B\_BBBB  
Bars

# THE PORTALS CLASSICS

For those nostalgic for gates with classic lines, CEBEL offers a range of models with historical reflections, made entirely of aluminum. They are available in their shapes and possible openwork.

Much lighter and more manageable than iron, they also have a better lifespan with easy maintenance.

The classic range is an excellent compromise for those who want a gate that spans the ages by combining classic charm with a practical and welcoming design.

## FULL



## SEMI-OPENAGED



## OPENWORKS



## THEIR FEATURES

Classic gates imitate their wrought iron ancestors. They go perfectly with houses anchored in French heritage. Elegant and imposing, they give a distinguished look to your entrance.

They can be adorned with superior ornaments in the same color as the gate or in imitation bronze.

For even more character, opt for a rosette on your door leaf:



## LEAF / SLIDING

Each gate model exists in a swing or sliding version.

You can personalize it 100% by choosing the dimensions

of your portal and determining its filling, its colors, its customizations.

Design your gate from A to Z!

STYLE  
CLASSIC



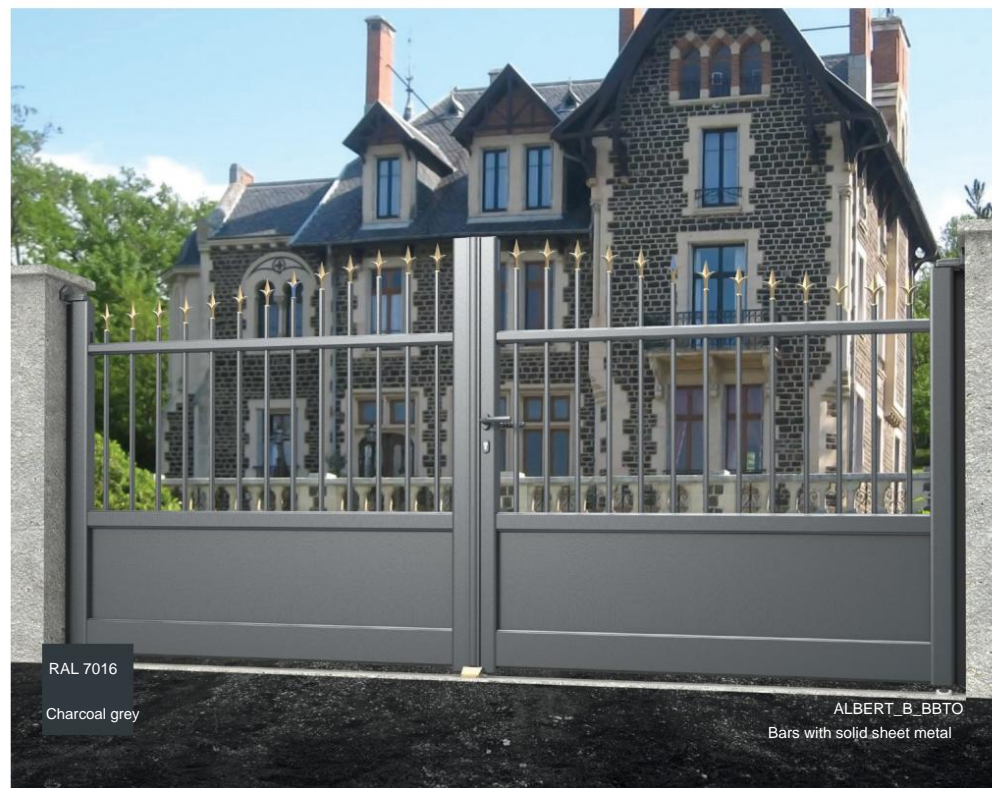
RAL 1015  
Ivory  
clear

EMILE\_B\_BBTO  
Bars with solid sheet metal

# PORTALS CLASSICS

**“A link between past and future”**

The classic gate, elegant and timeless, highlights your entrance and your property. It takes on the style of wrought iron and gives an impression of refinement. Modernized in aluminum, it plays a coin toss between past and future.



RAL 7016

Charcoal grey

ALBERT\_B\_BBTO  
Bars with solid sheet metal



## Zoom on SHAPES

The classic range takes up the shapes that make up the charm of times gone by: gendarme hat or fitted hat. It is also available in a straight version for the upper part. Its mechanical aluminum design ensures easy-maintenance robustness and exceptional durability.



STYLE  
CLASSIC



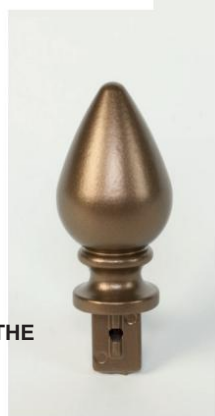
## Zoom on SCALLOPS

The openwork appearance of the portal lies in the presence of open spaces inside the frame. These openings can take the form of vertical bars, geometric patterns or more complex designs.

For a full look, choose festoons. These tall aluminum pieces installed between the bars protect your property from intrusions and prying eyes.



Water drop



THE

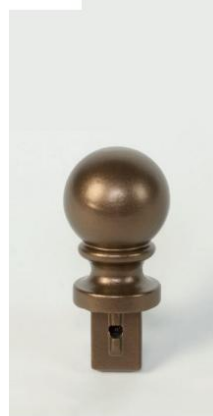
Spearhead



Lily flower



Ball



Ring



CENTRAL

Cross decor



Central volute



Upper volute



## Zoom on ORNAMENTS

The upper part of the portal is decorated with finely crafted decorative details, such as scrolls, floral motifs or geometric elements inspired by traditional craftsmanship. The central part can accommodate similar details.

These embellishments add a refined aesthetic dimension while recalling bygone eras.

A style from the past that combines with the present.



RAL 7016

Charcoal grey

EMILE\_B\_BFTO

Bars with solid sheet metal and festoons



Optional

RAL 3005

Red wine

JULES\_B\_BBTO

Bars with solid sheet metal

SOFTNESS  
RANGE



RAL 9005  
Deep  
black

STRAT31\_B\_BOL6

Slats spaced 160 mm with Aludibond wood tone

# RANGE CANDY

The DOUCEUR range offers essential and accessible models without compromising on quality. With several two-tone options, it also offers trendy models with a natural spirit: wood tone.

Choose a simple, efficient and secure portal while controlling your budget.

## SIMPLE



## BI-TONE



	SOFTNESS range	Custom made
Number of models	8	400+
Number of standard colors	4	25
Maximum leaf width	3,600mm	up to 6,000 mm (depending on model)
Maximum sliding width	4000mm	up to 6,000 mm (depending on model)
Guarantee	10 years on the structure 20 years on lacquering	25 years on the structure 25 years on lacquering

## THEIR FEATURES

CEBEL has adapted its offering to offer more affordable gate models. Still with the same quality and the same thickness of aluminum, the lower crosspiece here measures 80 mm. Without superfluous, the choice of joints is reduced, lacquered in the color of the gate to maintain the neat CEBEL finishes.

The DOUCEUR range offers limited dimensions and a predefined height, allowing more attractive prices.

## LEAF / SLIDING

Each gate model exists in a swing or sliding version.

You can personalize it by choosing the width of your gate, but also by determining its filling and its colors.



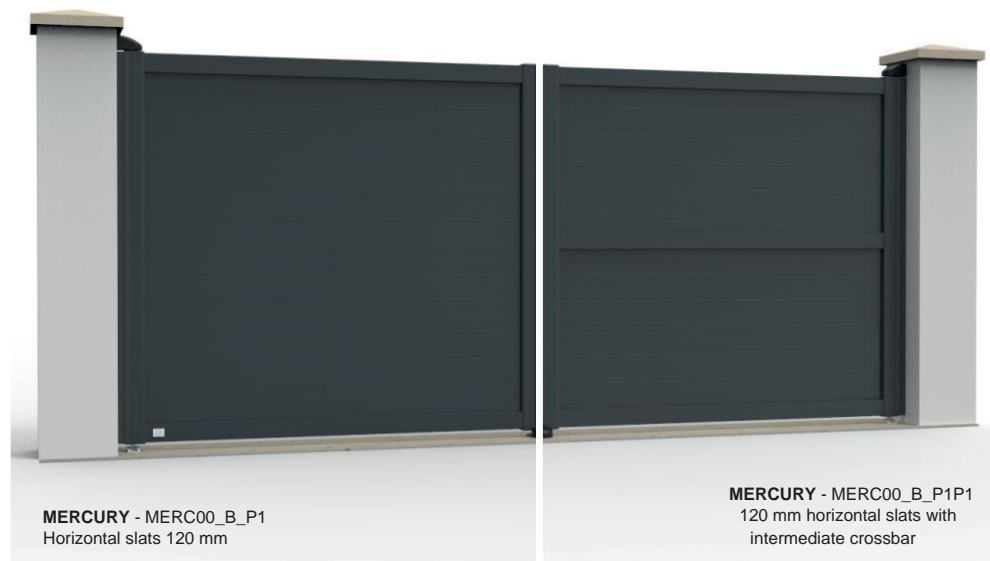
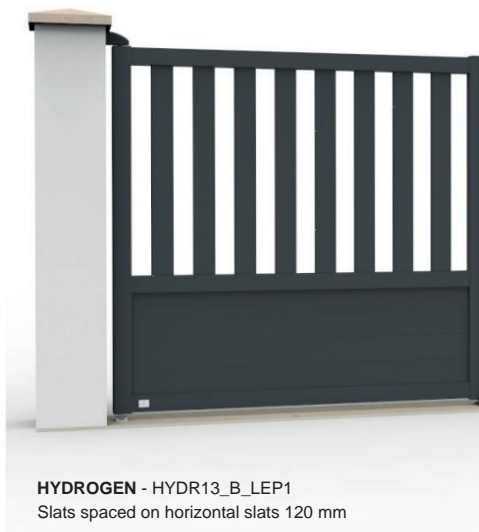
SOFTNESS  
RANGE



# CANDY SIMPLE

## “Customized lining”

The simple models in the DOUCEUR range are based on the most common shapes on the French market. All four models are a more affordable version for your home.



BONE

BONTESS



**ARAL - ARAL31\_B\_PIBO**  
120 mm boards with Aludibond wood tone

# CANDY BI TONE

**“Double game, aluminum and wood”**

The two-tone models in the DOUCEUR range play on materials with an imitation wood Aludibond plate. Trendy and original, they dress up your entryway even with a tighter budget.



**NYOS - NYO02\_B\_PIBO**  
120 mm boards with Aludibond wood tone



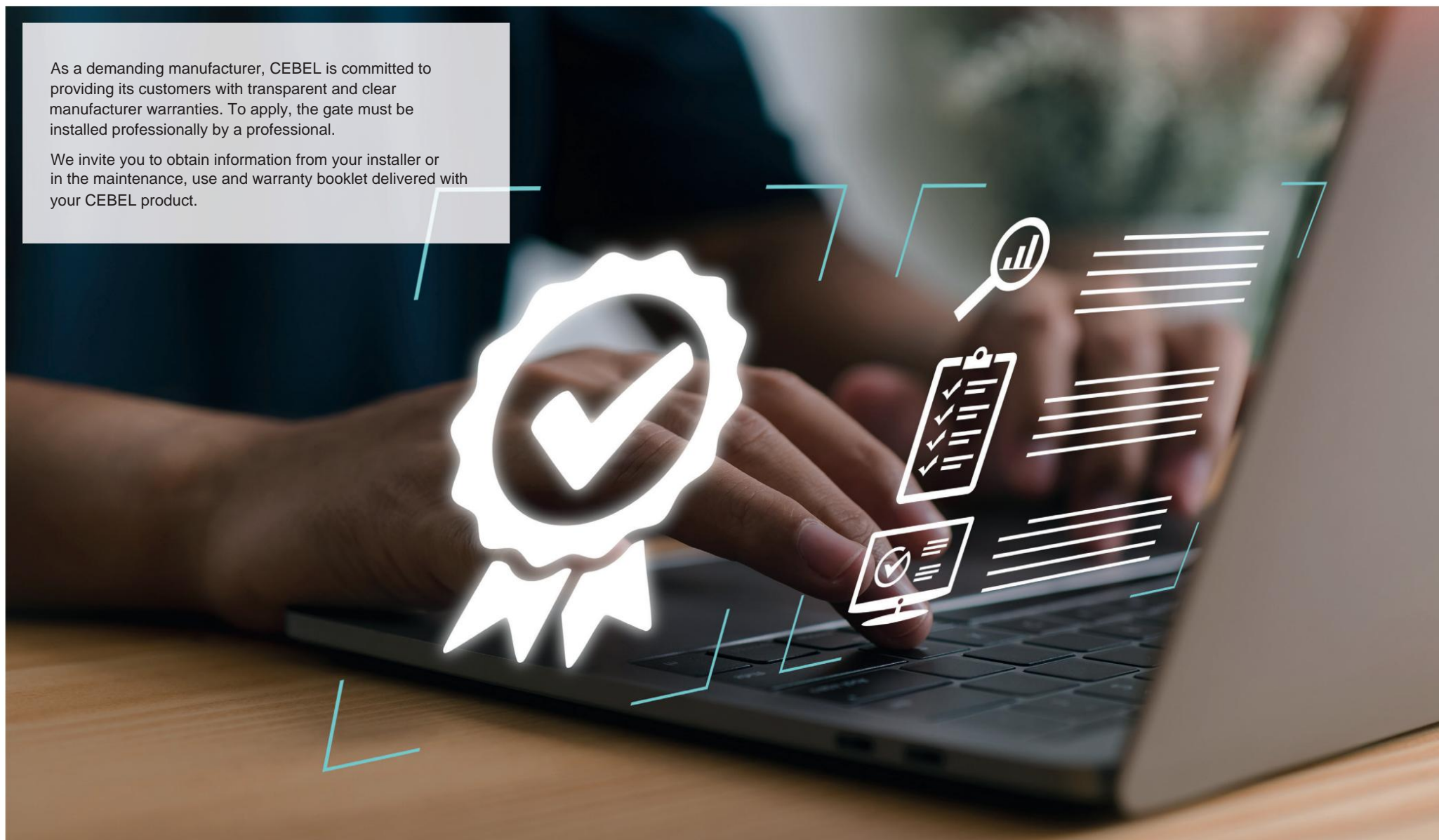
**STRATUS - STRA31\_B\_BOL6**  
Slats spaced 160 mm with Aludibond wood tone

# GUARANTEES

08/08/2024

As a demanding manufacturer, CEBEL is committed to providing its customers with transparent and clear manufacturer warranties. To apply, the gate must be installed professionally by a professional.

We invite you to obtain information from your installer or in the maintenance, use and warranty booklet delivered with your CEBEL product.

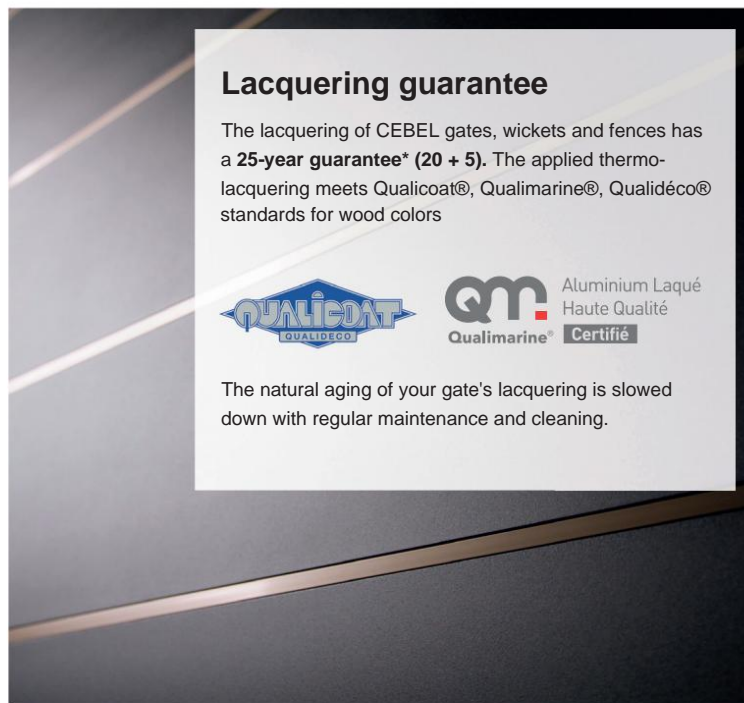




**Structural guarantee**



CEBEL gates, wickets and fences have a **25-year warranty\* (20 + 5)** on manufacturing, under normal use.

Thanks to the manual assembly design, in the event of a problem, an installer can come to your home to repair or change a part.



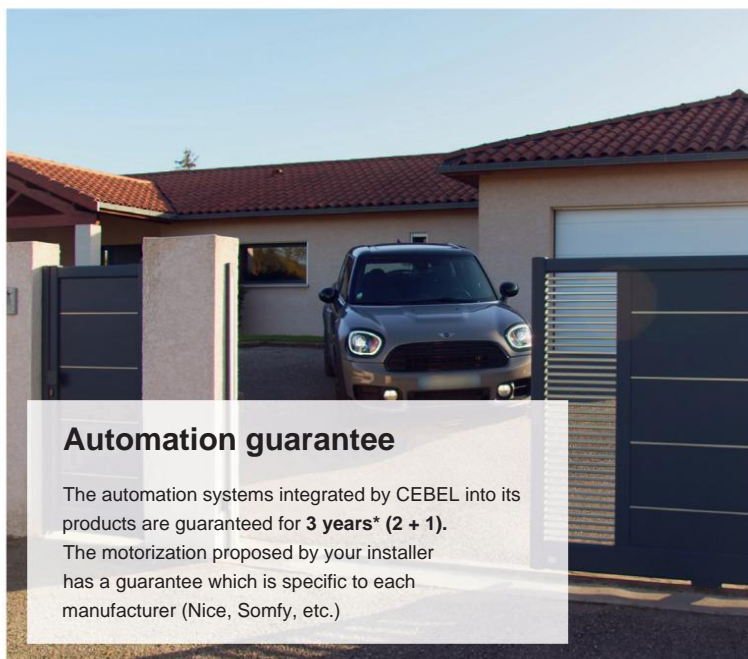
**Lacquering guarantee**

The lacquering of CEBEL gates, wickets and fences has a **25-year guarantee\* (20 + 5)**. The applied thermo-lacquering meets Qualicoat®, Qualimarine®, Qualidéco® standards for wood colors

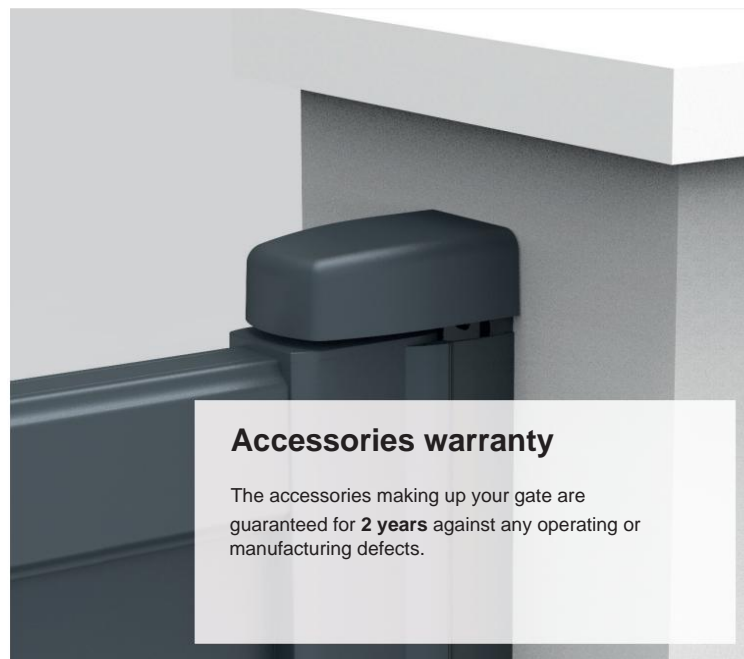
Aluminium Laqué  
Haute Qualité  
Certifié

The natural aging of your gate's lacquering is slowed down with regular maintenance and cleaning.



**Automation guarantee**

The automation systems integrated by CEBEL into its products are guaranteed for **3 years\* (2 + 1)**. The motorization proposed by your installer has a guarantee which is specific to each manufacturer (Nice, Somfy, etc.)



**Accessories warranty**

The accessories making up your gate are guaranteed for **2 years** against any operating or manufacturing defects.



**\*CLUB CEBEL**

The CEBEL Club is reserved for owners of a CEBEL product (*outside the DOUCEUR range*) installed by an Ambassador.

With the CEBEL Club, you can benefit from an extended warranty for your product:

- 25 years** structural warranty
- 25 years** lacquering guarantee

Registration is free on:

[www.cebel.fr/club-cebel-extension-garantie](http://www.cebel.fr/club-cebel-extension-garantie)

at the CEBEL Club



# MANUFACTURING SECRETS

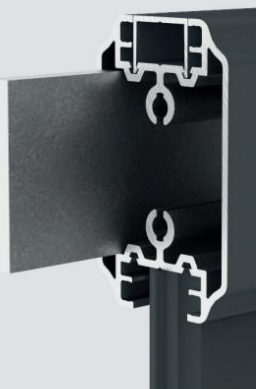
The design of the gates integrates all the parameters, characteristics and properties of the materials and its constraints for incomparable quality.

CEBEL blade profiles are exclusive. They are among the thickest on the market (2 to 3 millimeters depending on the piece) and they are reinforced inside. This design, which adds around 30% of raw material, ensures CEBEL gates are robust.

DIEBOLD/VER

## **HAS** Reinforced sleepers

The crosspiece, which can be used to carry automation equipment, is reinforced by an aluminum profile 50 mm x 8 mm thick over the entire width of the leaf.



## **B** High performance pivots and hinges

The mechanisms with stainless steel ball bearings and brass cage facilitate rotation. The pivots and hinges accept the forces, particularly in the case of automation, without taking up play or creating friction over time.



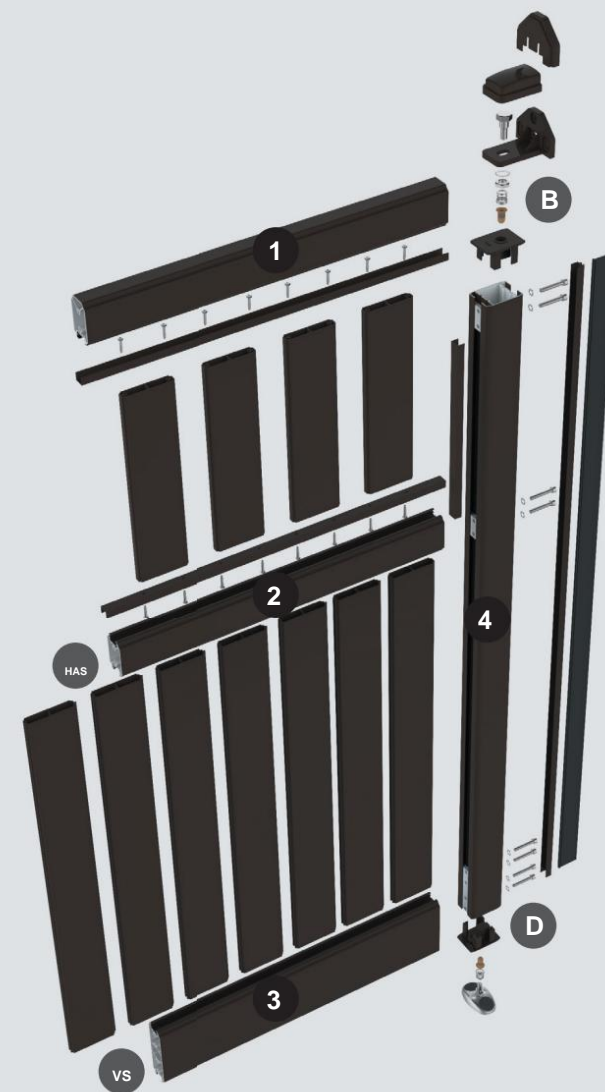
## **VS** Anti-vibration seals

To eliminate sound effects and vibrations, CEBEL inserts EPDM seals in its profiles.

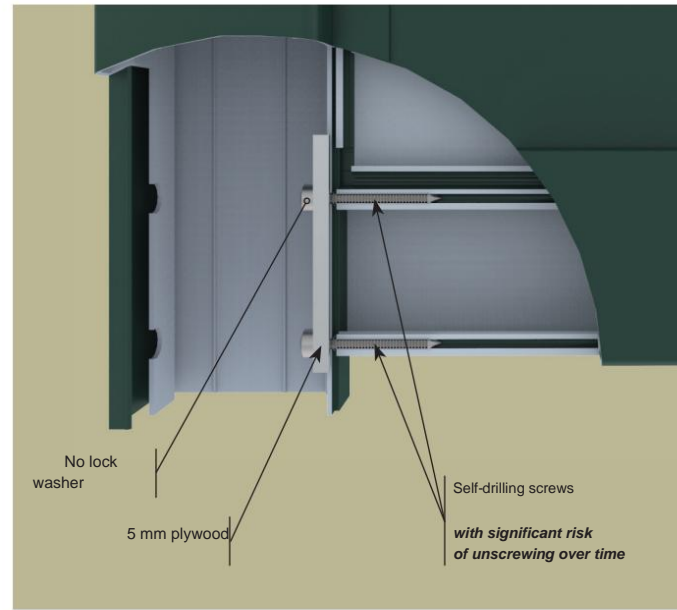
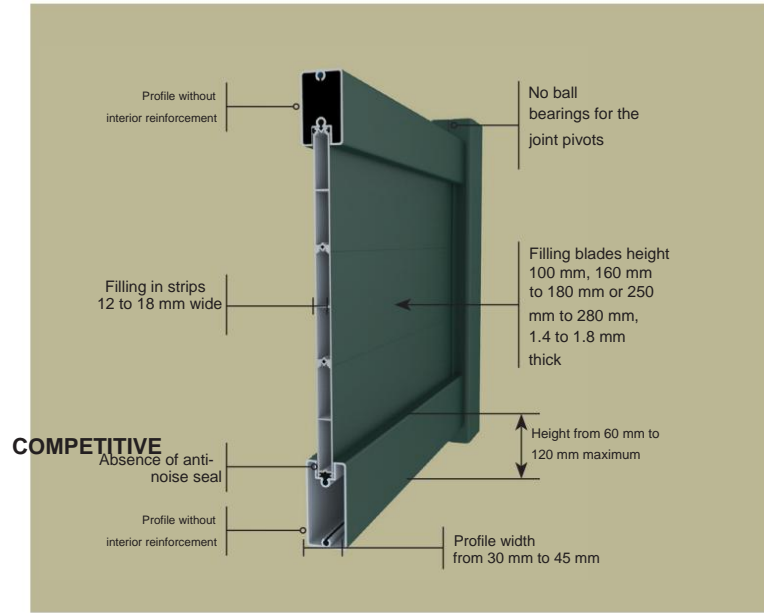


## **D** Stainless steel screws

All fixing screws are made of stainless steel, resistant to corrosion. The assembly is much more robust than with self-drilling screws which, with automation, can unscrew more frequently over time.



1. Upper crossbar (80 x 50 x 2 mm)
2. Intermediate crosspiece (80 x 50 x 2 mm)
3. Low crossbar (160 x 50 x 2 mm)
4. Upright (80 x 60 x 2 mm)

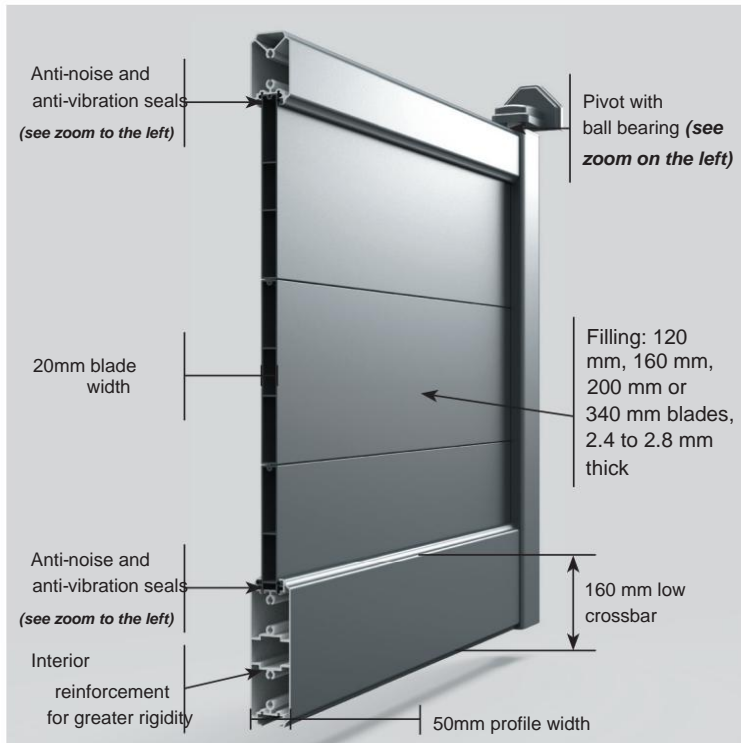


## ASSEMBLY MECHANICAL

Each CEBEL gate is made by hand in our workshop, without welding.

The assembly is carried out with the precision of a goldsmith to ensure a quality of production beyond the common.

Gates that are assembled manually can, if necessary, be dismantled and repaired locally to replace one or more parts. This helps avoid wastage of materials and limits the costs incurred.



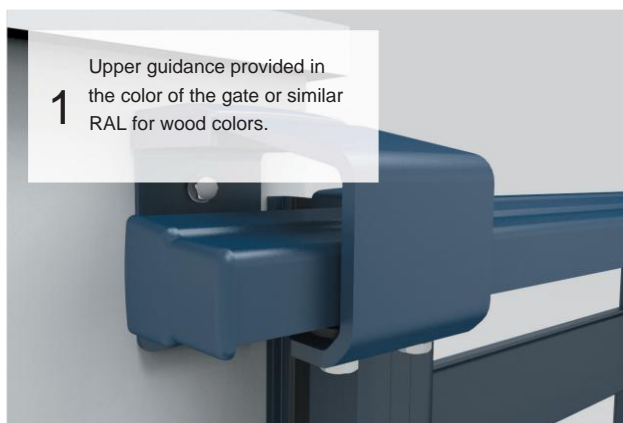
# INVISIBLE DETAILS

Each component of a CEBEL gate is selected for its mechanical properties, quality and aesthetic value of the materials. Subject to strong constraints (opening/closing), the connecting parts are as important as the leaves for the quality, robustness and lifespan of your gate.

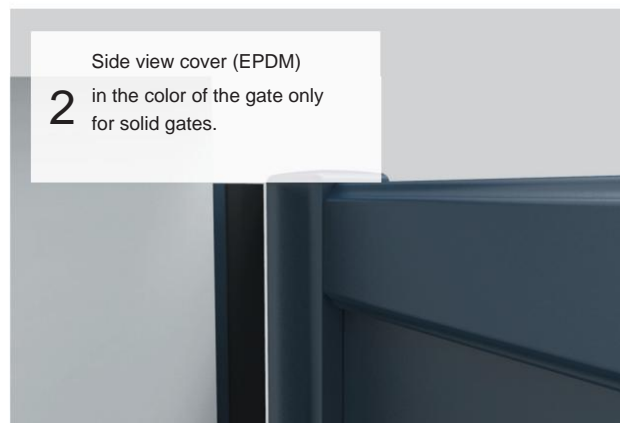
## SLIDING GATE



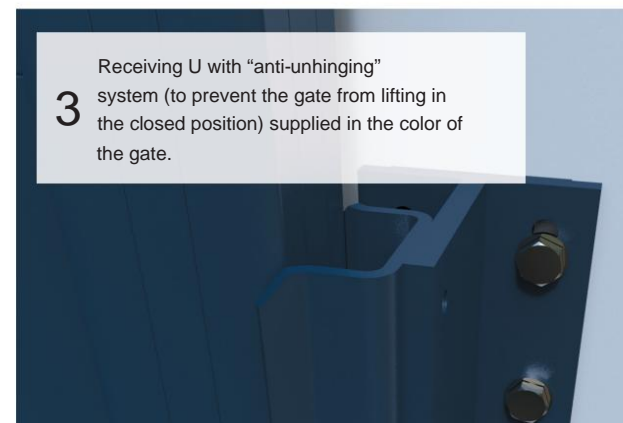
ØBERQVER



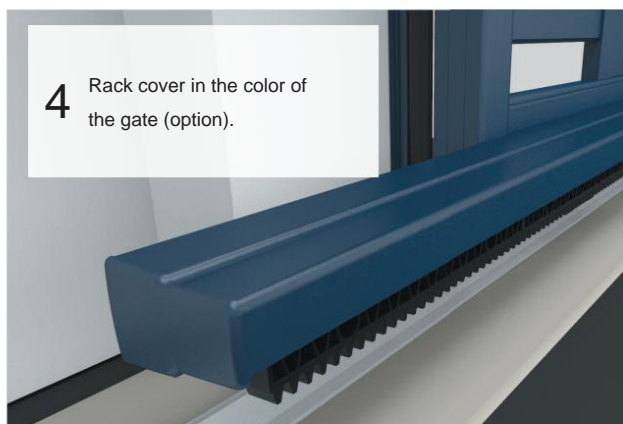
**1** Upper guidance provided in the color of the gate or similar RAL for wood colors.



**2** Side view cover (EPDM) in the color of the gate only for solid gates.



**3** Receiving U with "anti-unhinging" system (to prevent the gate from lifting in the closed position) supplied in the color of the gate.



**4** Rack cover in the color of the gate (option).

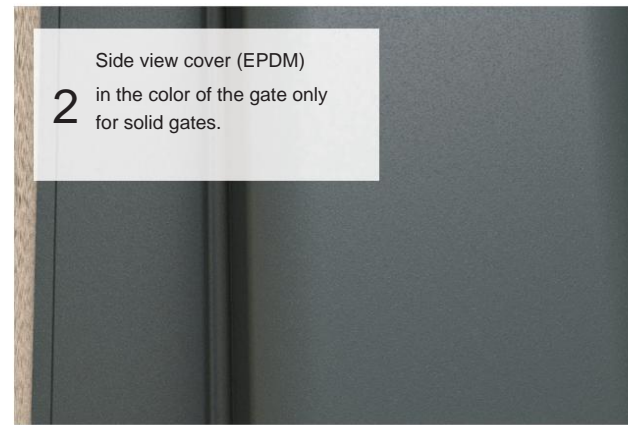


**5** Guide rail. Aluminum profile with drilling.



**6** Wheel cover in the color of the gate

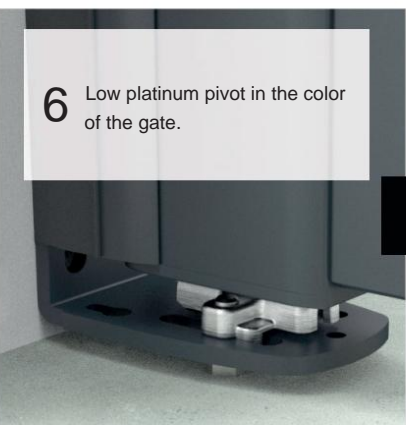
# SWING GATE



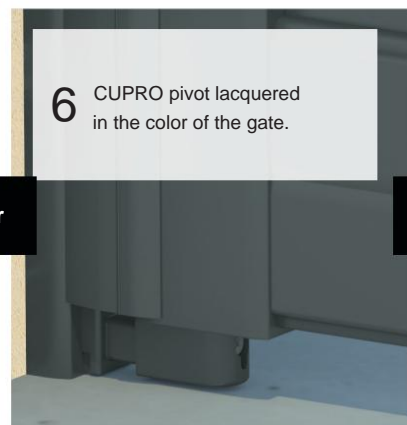
Or



Or



Or



Or





# THE MODELS GLOSSARY

With a wide range of models, you are sure to find the one that suits you and your home.  
Are you more of a fan of simplicity with our ARICA range or more original with the decorative sheets from the ATACAMA range? The choice is yours.  
Each gate model is available in swing and sliding versions.

more pictures



OVERVIEW



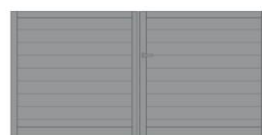
ARICA P.48 - ARIC00\_B\_P1



ARICA P.48 - ARIC00\_B\_V1



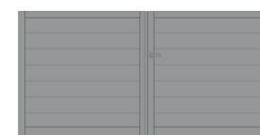
ARICA P.48 - ARIC00\_B\_ID



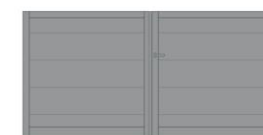
ARICA P.48 - ARIC00\_B\_P6



ARICA P.48 - ARIC00\_B\_V6



ARICA P.48 - ARIC00\_B\_P2



ARICA P.48 - ARIC00\_B\_P3



ARICA P.48 - ARIC12\_B\_P1P1



ARICA P.48 - ARIC12\_B\_V1V1



ARICA P.48 - ARIC12\_B\_IDIG



ARICA P.48 - ARIC12\_B\_P6P6



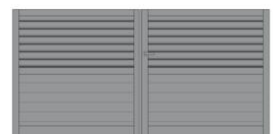
ARICA P.48 - ARIC12\_B\_V6V6



ARICA P.48 - ARIC00\_B\_ZH



ARICA P.48 - ARIC12\_B\_ZHZH



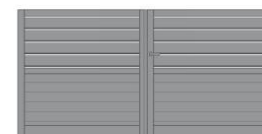
ARICA P.48 - ARIC12\_B\_ZHP1



ARICA P.48 - ARIC00\_B\_BV



ARICA P.48 - ARIC12\_B\_BVBV



ARICA P.48 - ARIC12\_B\_BVP1



MAUNA LOA P.54 - MALO00\_B\_S6



MAUNA LOA P.54 - MALO00\_B\_S2



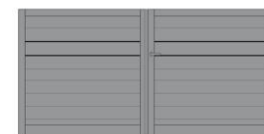
MAUNA LOA P.54 - MALO00\_B\_S3



MAUNA LOA P.54 - MALO31\_B\_P1S5



MAUNA LOA P.54 - MALO31\_B\_P6S5



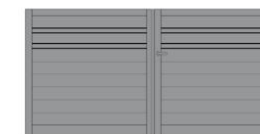
MAUNA LOA P.54 - MALO00\_B\_62



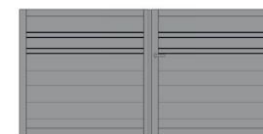
MAUNA LOA P.54 - MALO00\_B\_H2



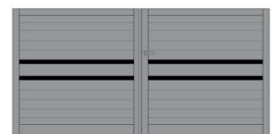
MAUNA LOA P.54 - MALO00\_B\_V2



MAUNA LOA P.54 - MALO00\_B\_64



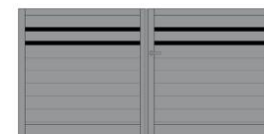
MAUNA LOA P.54 - MALO00\_B\_H4



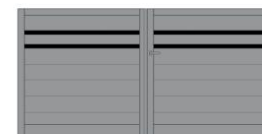
MAUNA LOA P.54 - MALO00\_B\_65



MAUNA LOA P.54 - MALO00\_B\_H5



MAUNA LOA P.54 - MALO00\_B\_67



MAUNA LOA P.54 - MALO00\_B\_H7



MAUNA LOA P.54 - MALO45\_B\_P6V5S5



MAUNA LOA P.54 - MALO45\_B\_P2V5S5



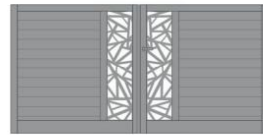
MAUNA LOA P.54 - MALO00\_B\_S12



MAUNA LOA P.54 - MALO00\_B\_P2B2



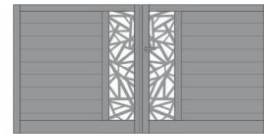
ATACAMA P.60 - ATAC23\_B\_P1TB



ATACAMA P.60 - ATAC31\_B\_P1TB



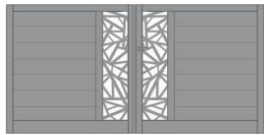
ATACAMA P.60 - ATAC23\_B\_P6TB



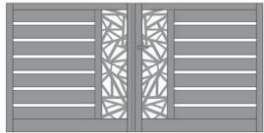
ATACAMA P.60 - ATAC31\_B\_P6TB



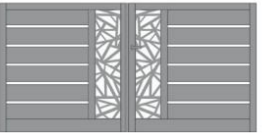
ATACAMA P.60 - ATAC23\_B\_P2TB



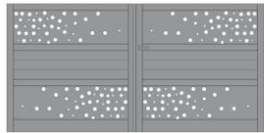
ATACAMA P.60 - ATAC31\_B\_P2TB



ATACAMA P.60 - ATAC31\_B\_L6TB



ATACAMA P.60 - ATAC31\_B\_L2TB



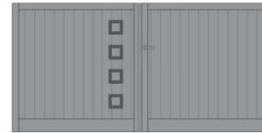
RAFF00\_B\_P1



KRUB01\_B\_L2P1



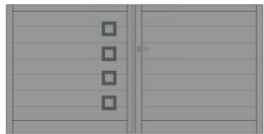
GANYMEDE P.66 - GANY09\_B\_P1



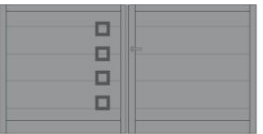
GANYMEDE P.66 - GANY09\_B\_V1



GANYMEDE P.66 - GANY09\_B\_P6



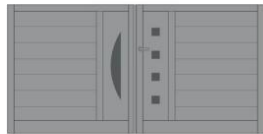
GANYMEDUS P.66 - GANY09\_B\_P2



GANYMEDUS P.66 - GANY09\_B\_P3



CARENE P.68 - CARE09\_B\_P6DA



CARENE P.68 - CARE09\_B\_P2DA



HULL P.68 - CARE09\_B\_P3DA



ORION P.68 - ORIO09\_B\_S6DA



ORION P.68 - ORIO09\_B\_S2DA



ORION P.68 - ORIO09\_B\_S3DA



ARICA openwork P.74 - ARIC23\_B\_LEP1



ARICA openwork P.74 - ARIC23\_B\_LEV1



ARICA openwork P.74 - ARIC23\_B\_LEID



ARICA openwork P.74 - ARIC13\_B\_LEP1



ARICA openwork P.74 - ARIC13\_B\_LEV1



ARICA openwork P.74 - ARIC13\_B\_LEID



ARICA openwork P.74 - ARIC00\_B\_LE



ARICA openwork P.74 - ARIC00\_B\_BB



ARICA openwork P.74 - ARIC12\_B\_LELE



ARICA openwork P.74 - ARIC12\_B\_BBBB



ARICA openwork P.74 - ARIC00\_B\_LH



ARICA openwork P.74 - ARIC12\_B\_LHLH



ARICA openwork P.74 - ARIC00\_B\_L6



ARICA openwork P.74 - ARIC12\_B\_L6L6



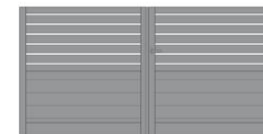
ARICA openwork P.74 - ARIC00\_B\_L2



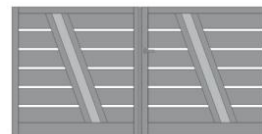
ARICA openwork P.74 - ARIC12\_B\_L2L2



ARICA openwork P.74 - ARIC12\_B\_LHP1



ARICA openwork P.74 - ARIC12\_B\_LHP6



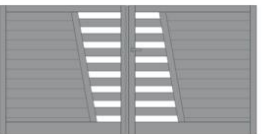
SAHARA P.76 - SAHA71\_B\_L2TP



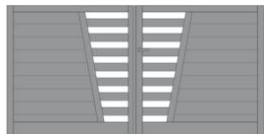
SAHARA P.76 - SAHA50\_B\_P1LE



SAHARA P.76 - SAHA52\_B\_P1LE



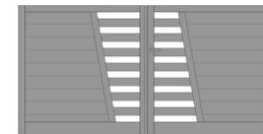
SAHARA P.76 - SAHA51\_B\_P1LE



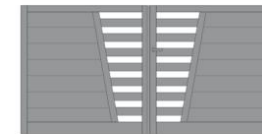
SAHARA P.76 - SAHA50\_B\_P6LE



SAHARA P.76 - SAHA52\_B\_P6LE



SAHARA P.76 - SAHA51\_B\_P6LE

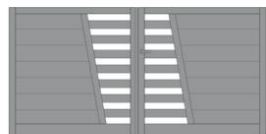


SAHARA P.76 - SAHA50\_B\_P2LE



SAHARA P.76 - SAHA52\_B\_P2LE

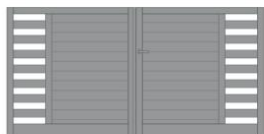
DEBORDER



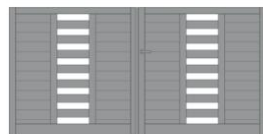
SAHARA P.76 - SAHA51\_B\_P2LE



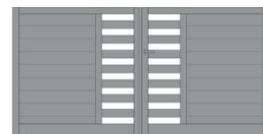
MAYON P.78 - MAYO31\_B\_P1LE



MAYON P.78 - MAYO13\_B\_P1LE



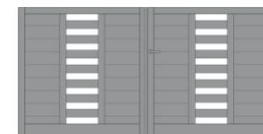
MAYON P.78 - MAYO22\_B\_P1LE



MAYON P.78 - MAYO31\_B\_P6LE



MAYON P.78 - MAYO13\_B\_P6LE



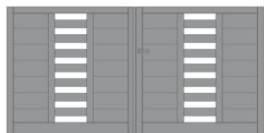
MAYON P.78 - MAYO22\_B\_P6LE



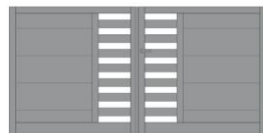
MAYON P.78 - MAYO31\_B\_P2LE



MAYON P.78 - MAYO13\_B\_P2LE



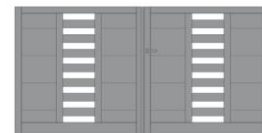
MAYON P.78 - MAYO22\_B\_P2LE



MAYON P.78 - MAYO31\_B\_P3LE



MAYON P.78 - MAYO13\_B\_P3LE



MAYON P.78 - MAYO22\_B\_P3LE



BEIPAN P.80 - BEIP23\_B\_LEV1



BEIPAN P.80 - BEIP23\_B\_LEP1



BEIPAN P.80 - BEIP23\_B\_LEID



BEIPAN P.80 - BEIP13\_B\_LEV1



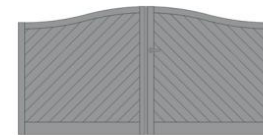
BEIPAN P.80 - BEIP13\_B\_LEP1



BEIPAN P.80 - BEIP13\_B\_LEID



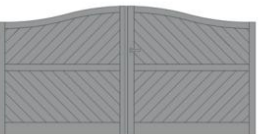
BEIPAN P.80 - BEIP00\_B\_V1



BEIPAN P.80 - BEIP00\_B\_ID



BEIPAN P.80 - BEIP12\_B\_V1V1



BEIPAN P.80 - BEIP12\_B\_IDIG



BEIPAN P.80 - BEIP53\_B\_LEV1



BEIPAN P.80 - BEIP53\_B\_LEP1



BEIPAN P.80 - BEIP53\_B\_LEID



BEIPAN P.80 - BEIP43\_B\_LEV1



BEIPAN P.80 - BEIP43\_B\_LEP1



BEIPAN P.80 - BEIP43\_B\_LEID



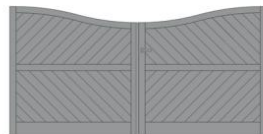
BEIPAN P.80 - BEIP30\_B\_V1



BEIPAN P.80 - BEIP30\_B\_ID



BEIPAN P.80 - BEIP52\_B\_V1V1



BEIPAN P.80 - BEIP52\_B\_IDIG



KUNSHAN P.82 - KUNS23\_B\_LEV1



KUNSHAN P.82 - KUNS23\_B\_LEP1



KUNSHAN P.82 - KUNS23\_B\_LEID



KUNSHAN P.82 - KUNS13\_B\_LEV1



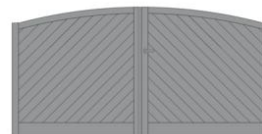
KUNSHAN P.82 - KUNS13\_B\_LEP1



KUNSHAN P.82 - KUNS13\_B\_LEID



KUNSHAN P.82 - KUNS00\_B\_V1



KUNSHAN P.82 - KUNS00\_B\_ID



KUNSHAN P.82 - KUNS12\_B\_V1V1



KUNSHAN P.82 - KUNS12\_B\_IDIG



KUNSHAN P.82 - KUNS53\_B\_LEV1



KUNSHAN P.82 - KUNS53\_B\_LEP1



KUNSHAN P.82 - KUNS53\_B\_LEID



KUNSHAN P.82 - KUNS43\_B\_LEV1



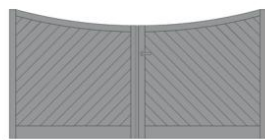
KUNSHAN P.82 - KUNS43\_B\_LEP1



KUNSHAN P.82 - KUNS43\_B\_LEID



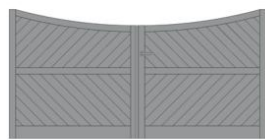
KUNSHAN P.82 - KUNS30\_B\_V1



KUNSHAN P.82 - KUNS30\_B\_ID



KUNSHAN P.82 - KUNS52\_B\_V1V1



KUNSHAN P.82 - KUNS52\_B\_IDIG



HAIWAN P.84 - HAIW23\_B\_LEV1



HAIWAN P.84 - HAIW23\_B\_LEP1



HAIWAN P.84 - HAIW23\_B\_LEID



HAIWAN P.84 - HAIW13\_B\_LEV1



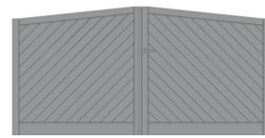
HAIWAN P.84 - HAIW13\_B\_LEP1



HAIWAN P.84 - HAIW13\_B\_LEID



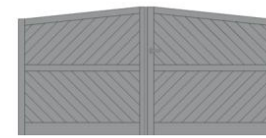
HAIWAN P.84 - HAIW00\_B\_V1



HAIWAN P.84 - HAIW00\_B\_ID



HAIWAN P.84 - HAIW12\_B\_V1V1



HAIWAN P.84 - HAIW12\_B\_IDIG



HAIWAN P.84 - HAIW53\_B\_LEV1



HAIWAN P.84 - HAIW53\_B\_LEP1



HAIWAN P.84 - HAIW53\_B\_LEID



HAIWAN P.84 - HAIW43\_B\_LEV1



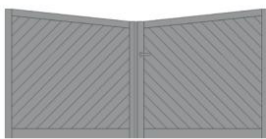
HAIWAN P.84 - HAIW43\_B\_LEP1



HAIWAN P.84 - HAIW43\_B\_LEID



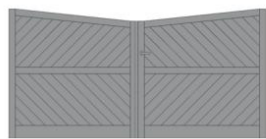
HAIWAN P.84 - HAIW30\_B\_V1



HAIWAN P.84 - HAIW30\_B\_ID



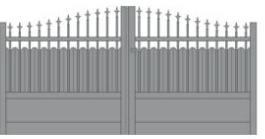
HAIWAN P.84 - HAIW52\_B\_V1V1



HAIWAN P.84 - HAIW52\_B\_IDIG



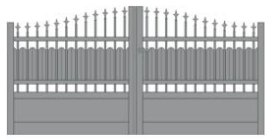
CLASSIC P.88 - ALBERT\_B\_BBTO



CLASSIC P.88 - ALBERT\_B\_BFTO



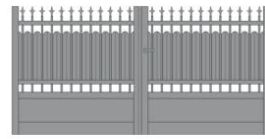
CLASSIC P.88 - ARLETT\_B\_BBTO



CLASSIC P.88 - ARLETT\_B\_BFTO



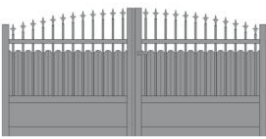
CLASSIC P.88 - DIANE\_B\_BBTO



CLASSIC P.88 - DIANE\_B\_BFTO



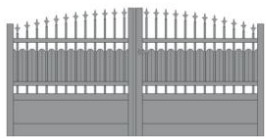
CLASSIC P.88 - EDMOND\_B\_BBTO



CLASSIC P.88 - EDMOND\_B\_BFTO



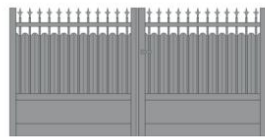
CLASSIC P.88 - EMILE\_B\_BBTO



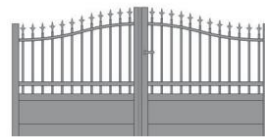
CLASSIC P.88 - EMILE\_B\_BFTO



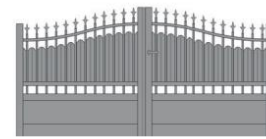
CLASSIC P.88 - JULES\_B\_BBTO



CLASSIC P.88 - JULES\_B\_BFTO



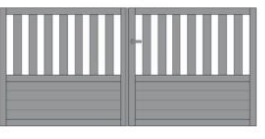
CLASSIC P.88 - NELSON\_B\_BBTO



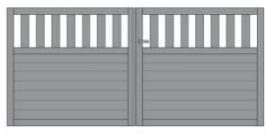
CLASSIC P.88 - NELSON\_B\_BFTO



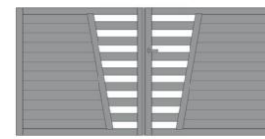
SOFTNESS P.94 - MERC00\_B\_P1



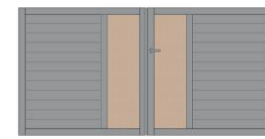
SOFTNESS P.94 - HYDR13\_B\_LEP1



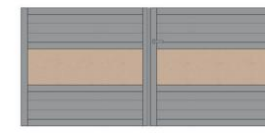
SOFTNESS P.94 - RACI23\_B\_LEP1



SOFTNESS P.94 - HIYO50\_B\_P1LE



SOFTNESS P.94 - ARAL31\_B\_P1BO



SOFTNESS P.94 - NYOS02\_B\_P1BO



SOFTNESS P.94 - STRA31\_B\_BOL6



C E B E L  
FRANCE