



▼ Net2 Access Control



Paxton Access



# Why use Access Control?

---

Why get rid of keys?

Access control gives you control over who gains entry to your building.

Keys also do this - so what is the difference?

When you lose a key, you have the expense and inconvenience of replacing locks and all the other keys, or you accept the building is no longer secure.

With access control you simply void an individual token from the system. There is no need to replace locks or keys.

The security of your building is always maintained.

Net2 is a PC based access control system, this booklet explains how it works.





# Why use PC based access control?

---

- ▼ Central control - all doors can be controlled from one place
- ▼ Reporting - an event is generated every time a token is used to gain access
- ▼ Complete flexibility - access can be granted to users according to time and place

See how Net2 does this in an easy and intuitive way





# What are the advantages of central control?

---

Full control of the system from your desk.

Users are added and instantly have the access rights that you permit.

Individual access rights can be altered, changes instantly update at the doors.

Tokens voided - someone leaves without handing back their token, simply bar that user token from the system.

Explorer style software makes all tasks quick and easy to perform.





  
Paxton Access  
Net2 Access Report

# What does reporting give me?

---

The events screen allows you to view the “real time” events as they are happening.

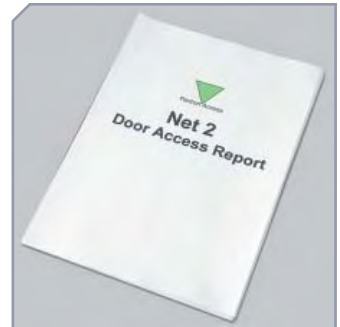
See “who is in today” with a glance at your computer.

You can see if unauthorised access has been attempted, either by forcing a door, or use of an invalid token.

Default reports are available from the software.

Standard reports can show all events, all events in a set time frame, last known position of a user and much more.

Report wizard - allows you to create custom reports.





# What does “complete flexibility” mean?

---

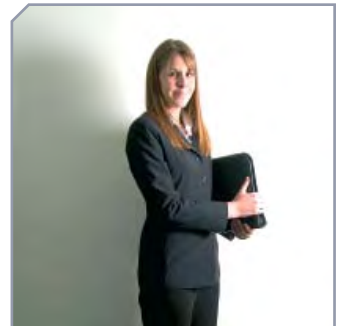
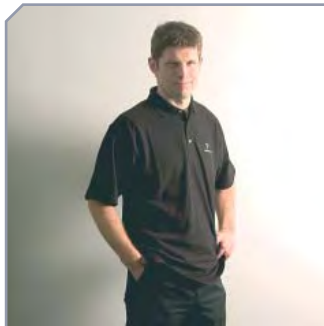
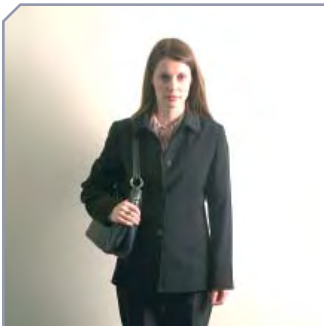
Using time zones means you can allow or refuse access to different individuals or groups of people, to different doors within set time scales.

Why? You may for example only wish factory staff to have access to offices in standard office hours. The factory staff may be set to allow access from 8am to 6pm, the office door may be set up to only allow access between 9am and 5.30pm for this group of users.

Time zones can be created to give groups of people or individuals access at set times of day.

Public holidays may be entered - and permissions set against these to allow or not allow access to staff.

Issuing cards is simplified. If a department is set up with a time zone of 9am-5.30pm on the office door, a token issued to a member of that department automatically only allows them through the door between 9am and 5.30pm.





# Using Net2 can be as simple as that!

---

*Sit back - enjoy your coffee and relax in the knowledge that your building is secure.*

*If you wish to know about Net2's other more powerful capabilities - read on.*



Engineering



Sales



Administration



# Multiple Workstations

---

Net2 provides the opportunity for more than one PC to be able to view events and control the system.

In the example above, three departments are able to access the system.

Engineering - The supervisor is able to issue and void tokens, he uses the reports screen to see who is in or out.

Sales - The sales manager is able to issue and void tokens. He can use the report screen to check who is in or out.

Administration - Issues temporary one day cards to visitors. Changes access levels for different staff and departments as needed. An alarm will generate on the events screen if unauthorised access is attempted.





# Remote sites

---

Net2 can be used to control access on remote sites using dial-up via modem or TCP/IP (Local or Wide Area Network connection LAN/WAN).

This provides many advantages:

If premises are remote from the main office and are not permanently staffed then access can be controlled from head office via the connection.

- ▼ You can bar a user from a remote site - effective immediately
- ▼ You can issue cards for a remote site - effective immediately
- ▼ Site Manager software allows control of several remote sites
- ▼ You can issue cards for a remote site in exactly the same way as at your head office





# Roll Call and muster reporting

---

Roll call and muster reporting is a means of checking staff in at a central point if there has been an alarm which requires the evacuation of a building.

- ▼ A reader is located on a safe area of the site - for example a gate house
- ▼ A roll call/muster report is generated on the PC at the muster point to show who was in the building at the time of the alarm
- ▼ Staff members present their token to the reader at the muster point
- ▼ The Net2 report will update to a status of "safe" against the record of the token holder
- ▼ At a glance you can check who has registered at the muster point - and who is still missing





Software application window showing a table of data:

ID	Name	Date	Status
1	John Doe	2010-03-01 10:00	Success
2	Jane Smith	2010-03-01 11:00	Success
3	Bob Johnson	2010-03-01 12:00	Success
4	Alice Brown	2010-03-01 13:00	Success
5	Charlie White	2010-03-01 14:00	Success
6	Diana Green	2010-03-01 15:00	Success

# Timesheet for time and attendance

---

Timesheet is used for recording simple time and attendance.

- ▼ Shows the number of hours worked by each employee
- ▼ Dedicated readers (independent of the door readers) need to be used for time and attendance
- ▼ Check at a glance, who is in, who is out, who is working out of the office, who is on holiday
- ▼ Set the number of days holiday per employee - Timesheet will show how many days remain to be taken
- ▼ Employees who work from home can log in over a network
- ▼ Timesheet information can be exported as a CSV file for use with payroll applications





LARM LTD.

# Intruder alarm integration

---

As well as controlling access into your building, Net2 can also disarm your intruder alarm if required.

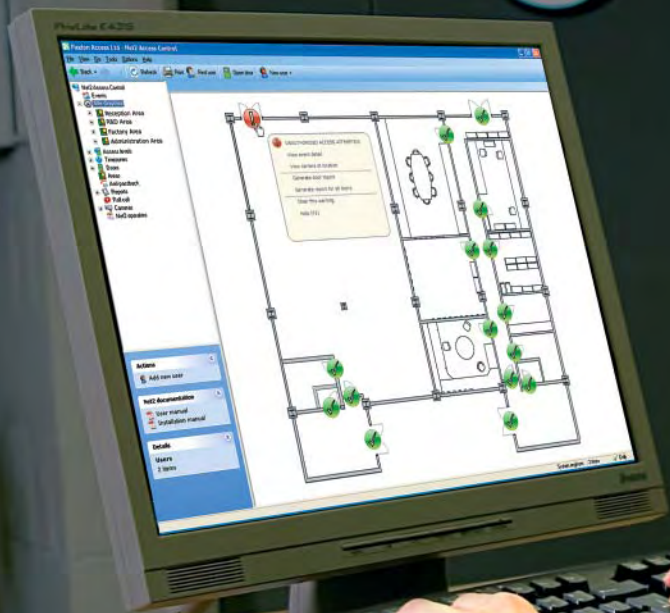
Those users with permission to unset the alarm are flagged using the Net2 software.

If a system user arrives early and does not have permission to unset the alarm, they will simply be denied access to the building. No drama, no fuss!

On leaving the building the intruder alarm can be set by simply presenting a valid token to a dedicated reader.

Net2 will integrate with the majority of intruder alarm systems. Intruder alarm integration greatly reduces the risk of false alarms and unnecessary call outs.





# Site Graphics

---

The 'Site Graphics' feature allows operators to monitor events around their site at a glance.

- ▼ Site Graphics provides a visual representation of the site, complete with door locations and real-time door status information
- ▼ Site Graphics alerts the user to door forced events or unauthorised access attempts and where they are occurring, allowing those monitoring to act swiftly to investigate the event



# New keypads, readers and exit buttons

---

Our new range of Net2 readers, keypads and exit buttons are available now. Great performance combined with stylish looks:



Alongside the TOUCHLOCK 'K series' keypads and 'P series' PROXIMITY readers we have introduced the KP series PROXIMITY keypad, with combined TOUCHLOCK and PROXIMITY functionality. KP series keypads are available in KP50 and KP75 versions (not available in stainless steel). E series exit buttons add a stylish finishing touch to a Paxton Access installation!

# Net2 - features we haven't mentioned

---

- ▼ IP camera integration - view real-time images from around your site
- ▼ Integration with 3rd party readers - Biometric, hands-free and smart card
- ▼ Anti-pass back - global, logical and timed
- ▼ Link to fire alarm system - automatically unlocks any doors designated as fire doors in the event of a fire alarm
- ▼ Triggers/Actions feature allows control of elevators, lighting, heating and much more





▼ Net2 Access Control



Paxton Access