



## Gate Automation Systems (Irl)

**Locall:** 1890 74 75 76    **Tel:** +353 65 6841175    **Fax:** +353 65 23639  
**Email:** [sfe@eircom.net](mailto:sfe@eircom.net)    **Web:** [www.automationgate.com](http://www.automationgate.com)

### Pass Automatic Bollard 610/P

Simple to use and easily integrated into urban furnishing, the range of mobile inset bollards provides a revolutionary service allowing the available areas to be exploited to the maximum; by using the mobile inset structure the service is only given when it is needed and furnishes a moving and suitable layout in places such as squares, pedestrian precincts or urban centres where it is not possible to install fixed barriers.

This range of cylindrical bollards are of exceptional strength and disappear into the ground, performing the function of genuine deterrents, guaranteeing pedestrian access but blocking the area to road traffic without altering the character of the area as they can be raised and lowered automatically or manually at set times or for authorised vehicles only.

#### Features

- Cylinder height: 600mm, 800mm
- Cylinder diameter: 355mm
- Cylinder thickness: 3mm
- Speed: 6cm/ sec.
- Manual neutral pulling
- Flasher: optional, 9 lighting points
- Finishes: FE37 matt steel and polished stainless steel optional finishes.
- Colours and personalisation to special non-standard requirements available on request.
- Non-stop duty cycle with added safety pressure switch built in as standard
- Standard length piping: da 2 a 5mtr.
- Connection line to SP station: 10mtr





## ***Gate Automation Systems (Irl)***

**Locall:** 1890 74 75 76    **Tel:** +353 65 6841175    **Fax:** +353 65 23639

**Email:** [sfe@eircom.net](mailto:sfe@eircom.net)    **Web:** [www.automationgate.com](http://www.automationgate.com)

### **Pass Automatic Bollard 127/P**

Simple to use and easily integrated into urban furnishing, the range of mobile inset bollards provides a revolutionary service allowing the available areas to be exploited to the maximum; by using the mobile inset structure the service is only given when it is needed and furnishes a moving and suitable layout in places such as squares, pedestrian precincts or urban centres where it is not possible to install fixed barriers.

This range of cylindrical bollards are of exceptional strength and disappear into the ground, performing the function of genuine deterrents, guaranteeing pedestrian access but blocking the area to road traffic without altering the character of the area as they can be raised and lowered automatically or manually at set times or for authorised vehicles only.

#### ***Features***

- Cylinder height: 600mm, 800mm
- Cylinder diameter: 127mm
- Cylinder thickness: 6mm
- Speed: 10cm/ sec.
- Manual neutral pulling
- Hydraulic pump
- Flasher: optional, 1 lighting point
- Housing frame: rectangular version
- Counter frame to be walled in: rectangular version
- Finishes: FE37 matt steel and polished stainless steel optional finishes.
- Colours and personalisation to special non-standard requirements available on request.
- Non-stop duty cycle with added safety pressure switch built in as standard
- Connection line to SP station: 10mtr.

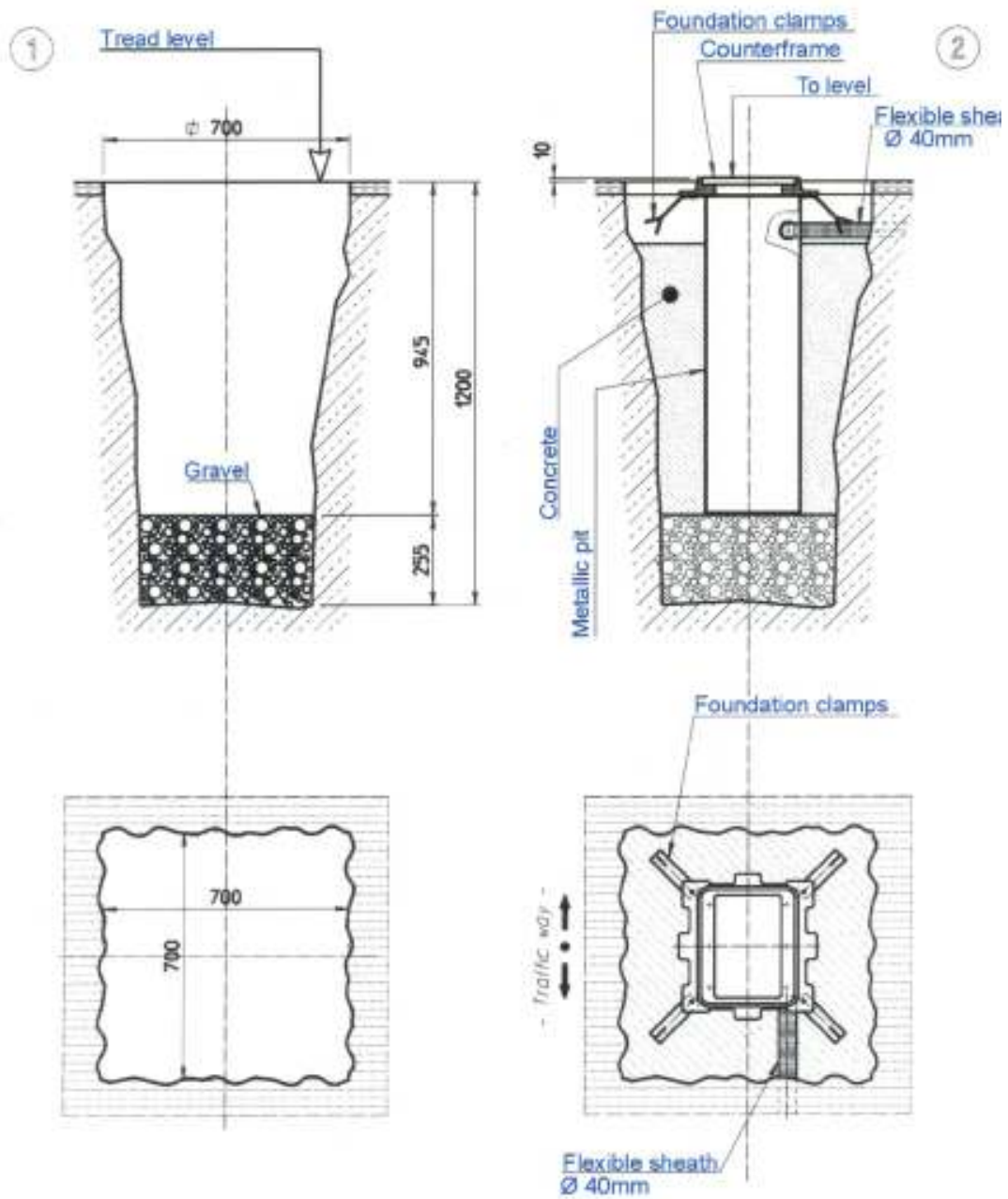


Brought to you by Gate Automation Systems (Irl.)





## Installation Plan





## **Gate Automation Systems (Irl)**

**Locall:** 1890 74 75 76    **Tel:** +353 65 6841175    **Fax:** +353 65 23639  
**Email:** [sfe@eircom.net](mailto:sfe@eircom.net)    **Web:** [www.automationgate.com](http://www.automationgate.com)

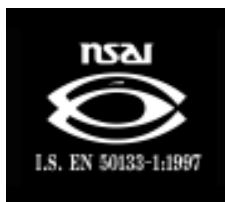
### **Pass Automatic Bollard 200/C**

Simple to use and easily integrated into urban furnishing, the range of mobile inset bollards provides a revolutionary service allowing the available areas to be exploited to the maximum; by using the mobile inset structure the service is only given when it is needed and furnishes a moving and suitable layout in places such as squares, pedestrian precincts or urban centres where it is not possible to install fixed barriers.

This range of cylindrical bollards are of exceptional strength and disappear into the ground, performing the function of genuine deterrents, guaranteeing pedestrian access but blocking the area to road traffic without altering the character of the area as they can be raised and lowered automatically or manually at set times or for authorised vehicles only.

#### **Features**

- Cylinder height: 600mm
- Cylinder diameter: 220mm
- Cylinder thickness: 4mm
- Speed: 5cm/ sec.
- Moving criteria: pneumatic
- Blinking lighting point
- Moving cylinder head: chequered plate
- Housing frame
- Counter frame to be walled in
- Finishes: Iron painted, stainless steel painted
- Non-stop duty cycle with added safety pressure switch built in
- Connection line to SP station: 10mtr



Brought to you by Gate Automation Systems (Irl.)





## **Gate Automation Systems (Irl)**

**Locall:** 1890 74 75 76    **Tel:** +353 65 6841175    **Fax:** +353 65 23639

**Email:** [sfe@eircom.net](mailto:sfe@eircom.net)    **Web:** [www.automationgate.com](http://www.automationgate.com)

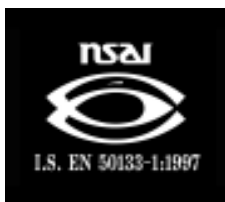
### **Automatic Bollard 275/K**

Simple to use and easily integrated into urban furnishing, the range of mobile inset bollards provides a revolutionary service allowing the available areas to be exploited to the maximum; by using the mobile inset structure the service is only given when it is needed and furnishes a moving and suitable layout in places such as squares, pedestrian precincts or urban centres where it is not possible to install fixed barriers.

This range of cylindrical bollards are of exceptional strength and disappear into the ground, performing the function of genuine deterrents, guaranteeing pedestrian access but blocking the area to road traffic without altering the character of the area as they can be raised and lowered automatically or manually at set times or for authorised vehicles only.

#### **Features**

- Cylinder height: 700mm
- Cylinder diameter: 275mm
- Cylinder thickness: 10mm
- Speed: 8cm/ sec.
- Manual neutral pulling
- Hydraulic pump
- Flasher: optional, 9 lighting points
- Housing frame
- Counter frame to be walled in
- Finishes: Iron painted
- Non-stop duty cycle with added safety pressure switch built in
- Connection line to SP station: 10mtr



Brought to you by Gate Automation Systems (Irl.)





## ***Gate Automation Systems (Irl)***

**Locall:** 1890 74 75 76    **Tel:** +353 65 6841175    **Fax:** +353 65 23639  
**Email:** [sfe@eircom.net](mailto:sfe@eircom.net)    **Web:** [www.automationgate.com](http://www.automationgate.com)

### **Automatic Bollard 275/P**

Simple to use and easily integrated into urban furnishing, the range of mobile inset bollards provides a revolutionary service allowing the available areas to be exploited to the maximum; by using the mobile inset structure the service is only given when it is needed and furnishes a moving and suitable layout in places such as squares, pedestrian precincts or urban centres where it is not possible to install fixed barriers.

This range of cylindrical bollards are of exceptional strength and disappear into the ground, performing the function of genuine deterrents, guaranteeing pedestrian access but blocking the area to road traffic without altering the character of the area as they can be raised and lowered automatically or manually at set times or for authorised vehicles only.

#### ***Features***

- Cylinder height: 600mm, 800mm
- Cylinder diameter: 275mm
- Cylinder thickness: 6mm
- Speed: 10cm/ sec.
- Manual neutral pulling
- Hydraulic pump
- Flasher: optional, 9 lighting points
- Housing frame
- Counter frame to be walled in
- Finishes: FE37 matt steel and polished stainless steel optional finishes, others available on request.
- Colours and personalisation to special non-standard requirements
- Non-stop duty cycle with added safety pressure switch built in
- Possibility of designing pay-as-you-enter systems in city centres
- Connection line to SP station: 10mtr

